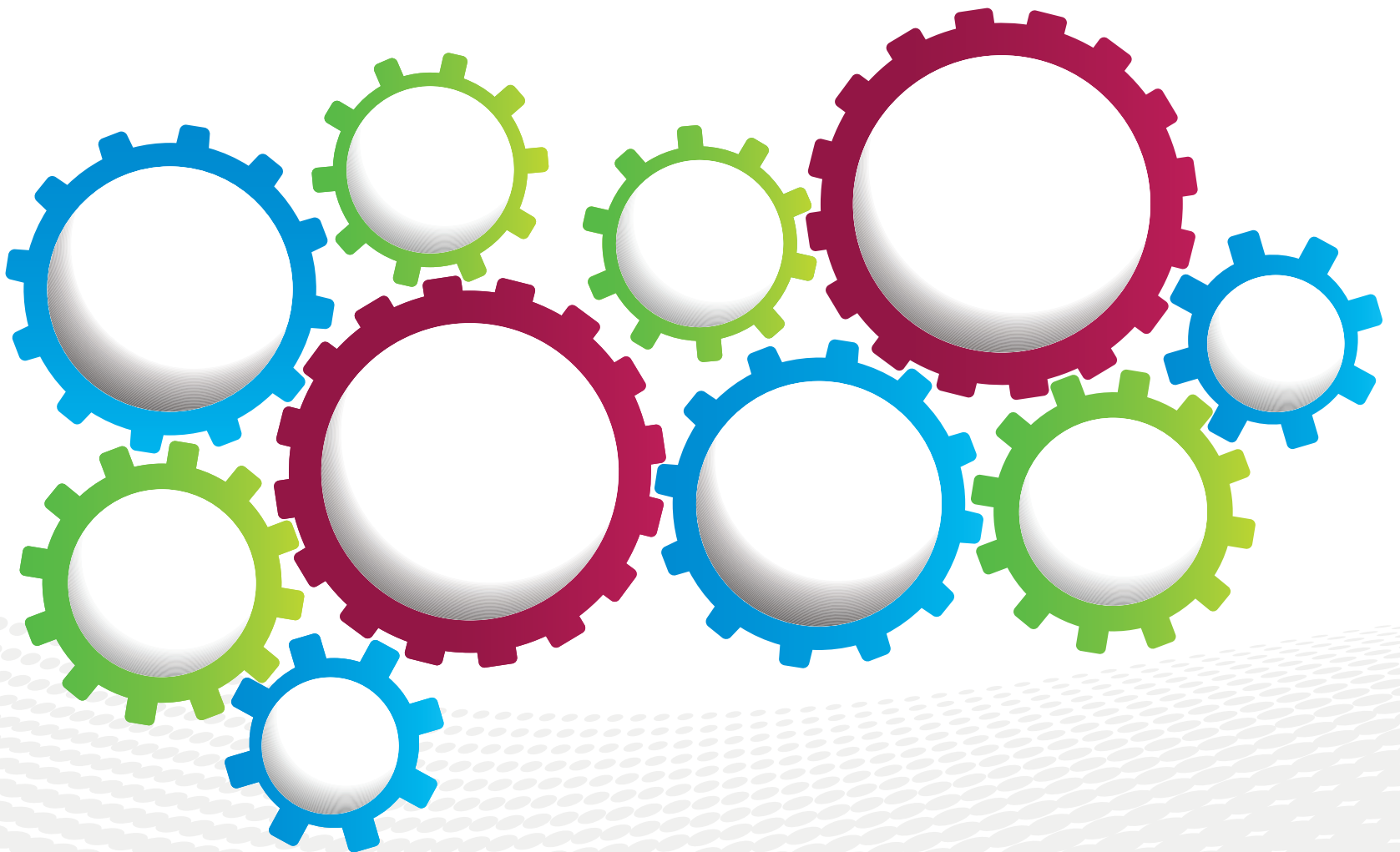




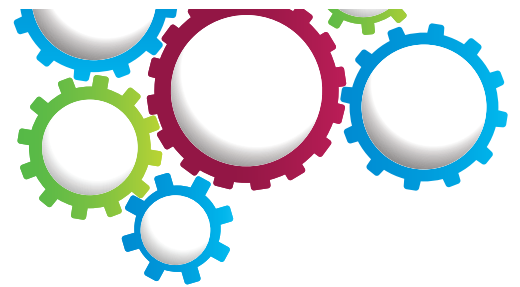
2015 EHS Compliance Excellence Conference

May 20-21 | Marriott Marquis | Atlanta, GA



2015 EHS Compliance Excellence Conference

May 20-21 | Marriott Marquis | Atlanta, GA



Welcome!

For such a perennial topic, environment, health and safety (EHS) compliance is anything but routine. We know the careful attention that's required to articulate a vision, to put together a management system, and to integrate those principles into the fabric of your organization. That's why we're proud to showcase the solutions of those who have successfully gone through this process from within companies of all sizes. And while we strive to present you with actionable insights you can put to use in your own companies, our agenda is just the starting point for the conversation that this conference is really intended to foster. What you don't see featured here are the names of the experts in the room, and the lessons you all have learned from the work you do every day. We hope you'll add value to this experience by sharing your stories as we use this opportunity to learn together.

Thank you for joining us in Atlanta!

Sincerely,

Carol Singer Neuvelt

Executive Director

NAEM



About NAEM

The National Association for Environmental Management (NAEM) empowers corporate leaders to advance environmental stewardship, create safe and healthy workplaces, and promote global sustainability. As the largest professional community for EHS and sustainability decision-makers, we provide peer-led educational conferences, benchmarking research and an active network for sharing solutions to today's corporate EHS and sustainability management challenges. Visit NAEM online at www.naem.org.



8:00 - 9:00 a.m.	Registration and Breakfast
9:00 - 9:15 a.m.	Welcome and Introductions <ul style="list-style-type: none">• Carol Singer Neuvelt, Executive Director; NAEM
9:15 - 10:15 a.m.	Identifying and Prioritizing EHS Risk <p>How do you know your efforts are focused on the issues with the biggest potential impact to your business? This session will look at how CP Kelco uses a detailed matrix approach to evaluate all risks and then drive resource allocation. The presentation will discuss the large number of people that feed information into the matrix and the wide range of decisions the matrix is used for, including investment opportunities, risk reduction projects and product quality.</p> <ul style="list-style-type: none">• Rodney Canada, Vice President, Environmental Health, Safety and Sustainability; CP Kelco U.S. Inc.
10:15 - 10:30 a.m.	Break
10:30 a.m. - 12:00 p.m.	Approaches to Auditing <p>This session will examine the various approaches to EHS audit programs that three companies have taken in order to improve performance. The speakers will discuss past management structures, motivations for re-organizing their programs and the resulting gains on audit outcomes. You will gain insights into critical elements of audit programs such as staffing, data collection, records management and corrective action measures.</p> <ul style="list-style-type: none">• Mike Morgan, Group Environmental Director; BBA Aviation plc• Asif A. Ansari, Manager, Environmental Compliance/Risk Management; USPS• Scott Rois, Audit Center of Excellence Leader; Koch Industries Inc.
12:00 - 12:45 p.m.	Lunch
12:45 - 1:45 p.m.	Benchmarking Compliance Metrics <p>Which compliance metrics are your peers using to drive performance, and which ones are most valued by the leadership within their organizations? This interactive discussion will feature results from NAEM's conference survey. The full set of results will be made available to all conference attendees.</p> <ul style="list-style-type: none">• Mark Hause, Environmental Competency Leader; DuPont Co.• Taylor Gelsinger, Research Analyst; NAEM
1:45 - 2:15 p.m.	Break
2:15 - 3:45 p.m.	Domestic and International Regulatory Updates <p>This update will target the most important domestic regulatory developments and areas where change is happening, including GHS, state and federal enforcement priorities. We will also take a quick spin of the globe to update attendees on key regulatory changes over the past year and what to expect in the near future; with short stops in China and India to dive a bit deeper.</p> <ul style="list-style-type: none">• James Lee, Senior Regulatory Analyst; 3E Co.• Eric Wu, Senior Consultant; Antea Group
3:45 - 4:00 p.m.	Break
4:00 - 5:00 p.m.	Find, Train and Retain. Talent and Knowledge Management <p>As the economy improves, companies have been faced with a smaller pool of potential employees as well as increased turnover rates. The speakers in this session will discuss tools you can use to recruit prospective employees that meet your standards, as well as how to leverage available internal talent. The session will also highlight systems for retaining talent and keys to capturing knowledge for transfer to others.</p> <ul style="list-style-type: none">• Kisa Adkins, Global Environmental Compliance Program Manager; Newell Rubbermaid Inc.• Erik Petrovskis, Director Environmental Compliance & Sustainability; Meijer Inc.
5:00 - 6:00 p.m.	Networking Reception

Program Schedule

Thursday, May 21



8:00 - 9:00 a.m.

Registration and Breakfast

9:00 - 9:15 a.m.

Opening Remarks

- **Carol Singer Neuvelt**, Executive Director; NAEM

9:15 - 10:30 a.m.

Management Systems for Enterprise Compliance

This presentation will look at different management systems in use by companies to minimize risk and ensure compliance. The speakers will share a big picture look at their overall efforts, discuss the motivation for their companies' approach and highlight key strategies they have learned while leading compliance assurance at their organizations.

- **Larry Deeney**, Sr. Technical Leader – Global Environment; General Mills
- **Michelle Redfield**, Director, Safety, Environment & Process Improvement; Schneider Electric SE

10:30 - 10:45 a.m.

Break

10:45 a.m. - 12:00 p.m.

Data Management Strategies

EHS Compliance and reporting requires a large and expanding pool of data. Find out how your peers are structuring their technology to capture a high volume of quality data and then boil it down to produce meaningful information.

- **Kendall Minor**, Environmental Specialist; Georgia Power Co.
- **Michael Miller**, Vice President of Environmental Health & Safety; Dean Foods Co.

12:00 - 12:45 p.m.

Lunch

12:45 - 2:00 p.m.

An Inside Look at EPA Initiatives

Hear about the projects in the works at the EPA which will impact your work in the future. Our speaker will cover e-enterprise for the environment, e-permitting, air emissions and water monitoring projects. You will also learn about the new generation of smart tools that inspectors are employing to increase accuracy and reporting.

- **Leslie Cronkhite**, Supervisor; United States Environmental Protection Agency

2:00 p.m.

Adjourn



2015 EHS Management Forum

Oct. 14-16 | The Westin | Charlotte, NC

Finding Solutions,
Leading Forward

Register Now!
EHSforum.naem.org

