



# 2015 EHS Management Forum

Oct. 14-16, 2015 | The Westin | Charlotte, NC

# Finding Solutions, Leading Forward



## Dear Colleagues:

Welcome to the 23rd Annual EHS Management Forum in the exciting city of Charlotte!

Over the course of my engineering and EHS career, I have found that EHS and sustainability professionals can also be considered change agents. We explain and implement regulations, we find ways to achieve and maintain compliance, we lead teams through difficult issues. We represent and lead change, and as such we are often key to finding paths forward in navigating challenges. In sum, in doing our job as EHS and sustainability professionals, we embody this year's theme, "Finding Solutions, Leading Forward".

It has been my privilege to work with an excellent Forum planning committee, which worked tirelessly this year. I think you will agree that they have assembled an outstanding program. It is my hope that the sessions will provide you with practical tools you can take back home to help you "lead forward".

I look forward to the Forum each year to keep me current with the latest ideas, share information, and to maintain connections I've made in previous years (plus make new ones!). The relaxed setting of the Forum provides a unique opportunity that combines all of these elements over two days. I hope that our keynotes, sessions and receptions give you new perspectives, new ideas and new contacts that you can use in "finding solutions" to your next set of challenges.

Thank you for joining us at the Forum. I hope you'll find this time to be as valuable as I do, and that I will see you next year!

Best,



**Megan Lum**

**Forum Program Chair**

*Director, Environment, Generation*  
The Pacific Gas and Electric Co.



## About NAEM

The National Association for Environmental Management (NAEM) empowers corporate leaders to advance environmental stewardship, create safe and healthy workplaces, and promote global sustainability. As the largest professional community for EHS and sustainability decision-makers, we provide peer-led educational conferences and an active network for sharing solutions to today's corporate EHS and sustainability management challenges. Visit NAEM online at [www.naem.org](http://www.naem.org).

# General Information

## Registration Hours *Providence Promenade*

Tuesday, October 13: 2:00 p.m. - 7:00 p.m.  
Wednesday, October 14: 7:00 a.m. - 7:00 p.m.  
Thursday, October 15: 7:00 a.m. - 7:00 p.m.

## Network and Share Your Feedback Through Our Mobile App

Our mobile app contains all of the key conference details, as well as a feature to help you start connecting to your peers. To get started:

1. **Download the app:** Go to <https://crowd.cc/s/9rOc> to download the mobile event app. You can also access it by scanning the QR code:



An online version of the event app can be found here: <https://crowd.cc/ehs-forum>

2. **Start Connecting:** Stop wondering where you stashed that business card and use our app to connect with fellow conference attendees. You can find this feature in the 'Connect' screen.
3. **Share your feedback:** Let us know what you think about the sessions you attend by sharing your feedback via our online evaluation forms.

**Any questions?** Come visit us at the NAEM help desk near the registration booth.

# Table of Contents

Schedule-at-a-Glance .....	4
Keynote Sessions .....	6
Forum Sponsors .....	7
Program Schedule .....	11
Exhibit Hall Floor Plan .....	27
Sponsors Listing .....	29
NAEM Affiliates Council .....	50
NAEM Corporate Members .....	51
Forum Committee .....	52



# Networking Highlights

## Annual Pre-Forum Golf Event

Tuesday, October 13  
8:30 a.m. - 3:00 p.m. *Ballantyne Hotel and Lodge*

Sponsored by:



## CDP North America Climate Change Leadership Celebration Cocktail Reception

Tuesday, October 13th  
5:30 - 7:00 p.m. *Harris Room*

Hosted by:



## Welcome Reception

Wednesday, October 14th  
5:30 - 7:00 p.m. *Grand Ballroom*

Sponsored by:



## Networking and Dinner Event

Thursday, October 15th – *Howl at the Moon Charlotte*  
6:30 - 10:00 p.m.

*Tickets are \$85 per person and are available at the registration desk.*

Just a short walk from the hotel, join your colleagues for dinner, drinks, networking and live music at Charlotte's favorite downtown night spot, Howl at the Moon. Get on the dance floor or sing-along with favorite pop songs from all decades. You are sure to have a great time relaxing with old friends and new!

## Women's Leadership Networking Breakfast

Friday, October 16th  
8:30 - 9:30 a.m. *Sharon Room*

*Tickets are \$49 per person and are available at the registration desk.*

# Schedule-at-a-Glance

Wednesday, October 14

7:00 a.m. Registration Opens *Providence Promenade*

7:00 - 8:00 a.m. Breakfast *Grand Ballroom*

8:00 - 8:30 a.m. Welcome and Conference Introductions *Providence Ballroom*

8:30 - 10:00 a.m. Path to Positive: Getting People Excited to Solve Climate and Sustainability Challenges *Providence Ballroom*

10:00 - 10:30 a.m. Morning Break *Grand Ballroom*

**TRACK 1:**  
Sustainability in a Changing Environment

**TRACK 2:**  
Optimizing EHS Performance

**TRACK 3:**  
Applying a Risk Lens

**TRACK 4:**  
Managing and Developing EHS Teams

10:30 a.m. - 12:00 p.m.

**SESSION 1:**  
Calculating and Communicating the Value of EHS&S Programs  
*Harris*

**SESSION 2:**  
Compliance Assurance: Brilliant at the Basics  
*Trade*

**SESSION 3:**  
Understanding Global Regulatory Trends  
*Tryon*

**SESSION 4:**  
Attract, Develop and Retain Top EHS&S Talent  
*Independence*

12:00 - 1:15 p.m. Roundtable Discussions Luncheon *Providence Ballroom*

1:30 - 3:00 p.m. **SESSION 5:**  
Managing in a Water Stressed World  
*Independence*

**SESSION 6:**  
Maximizing the Business Value of Management Systems and Conformance Standards  
*Harris*

**SESSION 7:**  
Best Practices for Operational Risk Assessment and Prioritization  
*Tryon*

**SESSION 8:**  
Engaging and Managing a Multigenerational Workforce  
*Trade*

3:00 - 3:45 p.m. Afternoon Break *Grand Ballroom*

3:45 - 5:15 p.m. **SESSION 9:**  
Shrinking Your Corporate GHG Footprint  
*Trade*

**SESSION 10:**  
Leveraging Supplier Engagement to Drive EHS & Sustainability Performance  
*Tryon*

**SESSION 11:**  
Understanding Board Expectations: What do EHS&S Leaders Need To Know  
*Independence*

**SESSION 12:**  
Next Generation Training  
*Harris*

5:30 - 7:00 p.m. Welcome Reception *Grand Ballroom*

## Track Descriptions

### TRACK 1: Sustainability in a Changing Environment

Learn how EHS&S leaders are preparing their businesses for issues like climate change and water scarcity, as well as how they are continuing to drive sustainability performance in an ever-changing global business climate by leveraging partnerships and internal resources.

### TRACK 2: Optimizing EHS Performance

Optimizing is defined as making something as effective, perfect, or useful as possible. We are constantly challenged to optimize all aspects of our programs and ensure continuous improvement in even the core aspects of EHS management and compliance. Sessions in this track will look at how companies are finding ways to improve their programs whether through shear management creativity or the use of emerging technologies or partnerships to deliver on the promise of optimization.

### TRACK 3: Applying a Risk Lens

Sessions in this track will explore risk through both an operational and strategic lens. Delve into risk from the perspective of process, product, financial, emerging regulatory and non-regulatory risks and get new ideas for communicating, managing and mitigating EHS&S risks.

### TRACK 4: Managing and Developing EHS Teams

This session will focus on how companies are developing their EHS staffs and ensuring they are prepared to attract and train the next generation of leaders in our field. It will also offer attendees insight into how to manage multigenerational teams as well as create training that's engaging and effective.





**Thursday, October 15**

7:00 a.m. Registration Opens *Providence Promenade*

7:30 - 8:15 a.m. Breakfast *Grand Ballroom*

8:15 - 8:30 a.m. Opening Remarks *Providence Ballroom*

8:30 - 10:00 a.m. Beyond Operations: Addressing Sustainability Expectations throughout the Value Chain *Providence Ballroom*

10:00 - 11:00 a.m. Morning Break *Grand Ballroom*

	<p><b>TRACK 1:</b> Sustainability in a Changing Environment</p>	<p><b>TRACK 2:</b> Optimizing EHS Performance</p>	<p><b>TRACK 3:</b> Applying a Risk Lens</p>	<p><b>TRACK 4:</b> Managing and Developing EHS Teams</p>
11:00 a.m. - 12:30 p.m.	<p><b>SESSION 13:</b> Leveraging NGO Partnerships to Advance Sustainability <i>Harris</i></p>	<p><b>SESSION 14:</b> Strategies for Safety Culture Reinvigoration <i>Tryon</i></p>	<p><b>SESSION 15:</b> Changing Climate Means Changing Risk <i>Independence</i></p>	<p><b>SESSION 16:</b> Building Product Stewardship Capacity <i>Trade</i></p>

12:30 - 1:30 p.m. Business-to-Business Luncheon *Providence Ballroom*

1:45 - 3:15 p.m. **SESSION 17:**  
All About Sustainability Metrics - Beyond EHS  
*Harris*

**SESSION 18:**  
Maximizing the ROI of Consultant Partnerships  
*Trade*

**SESSION 19:**  
Managing EHS Risk During Corporate Change  
*Tryon*

**SESSION 20:**  
Mobile Technologies Revolutionizing Employee Engagement  
*Independence*

3:15 - 3:45 p.m. Afternoon Break *Grand Promenade*

3:45 - 5:15 p.m. Advancing Sustainability using Creativity, Collaboration and the Principles of Improv Comedy *Providence Ballroom*

6:30 - 10:00 p.m. Networking and Dinner Event *Howl at the Moon*  
Tickets are available at the registration desk.

**Friday, October 16**

9:00 - 9:30 a.m. Grab-and-Go Pastries and Coffee *Providence Promenade*

8:30 - 9:30 a.m. Women's Leadership Networking Breakfast *Sharon*

9:30 - 11:30 a.m. NAEM Board of Directors Meeting *Brevard/34th Floor*

9:30 - 11:30 a.m. Discussion Groups *Providence I, II, III* (see Program Schedule for details)

11:30 a.m. Conference Adjourns

# Keynote Sessions

Wednesday, October 14

8:30 - 10:00 a.m.

## Path to Positive: Getting People Excited to Solve Climate and Sustainability Challenges

**Robert M. Perkowitz**, President; ecoAmerica

The business world is changing. Sustainability is no longer a “nice to have.” For leading companies, it’s a business management paradigm that impacts all business decisions and redefines their purpose. EHS&S leaders are more important now than ever to the business community’s ability to turn the corner on what it means to be a sustainable company. In order to put their full weight behind this shift, EHS&S leaders must be able to catalyze engagement and inspire people throughout their companies, from the shop floor to the C Suite, to act. But how? President of ecoAmerica, Bob Perkowitz, will discuss how we can better engage and empower our organizations to action, and will share examples of trigger points that have led to meaningful action for corporations.

Attendees will learn how to create a measurable and lasting increase in awareness, understanding and action among their colleagues and senior management. They will leave the session with new ideas, examples, and tools to help them understand and engage their organizations and broader communities to take leadership roles on these critical topics.



Robert Perkowitz

Thursday, October 15

8:30 - 10:00 a.m.

## Beyond Operations: Addressing Sustainability Expectations throughout the Value Chain

**Jonathan Atwood**, Vice President, Sustainability & Corporate Communications; Unilever plc

**Paige Goff**, Vice President, Sustainability and Business Communications; Domtar Corp.

*Moderator:* **Tensie Whelan**, former President: Rainforest Alliance and future Director; NYU Stern Center for Sustainable Business

Leaders of EHS and Sustainability can no longer focus exclusively on their operations. Stakeholders and society expect companies to reduce or eliminate their environmental and social impacts across their supply chains and the life cycles of their products, with a stretch goal of contributing net positive value back to society and the environment. It sounds like a tall order but the panelists in this session will discuss how they are tackling and delivering on these expectations. Attendees will get insights on how EHS&S leaders can find success through a more adept understanding and management of the “Corporate Ecosystem” and come away with strategies for success from three of the leading change-makers in our field.



Jonathan Atwood



Paige Goff



Tensie Whelan

3:45 - 5:15 p.m.

## Advancing Sustainability Using Creativity, Collaboration and the Principles of Improv Comedy

**Second City Works**

This exciting interactive keynote, put on by Second City Works, the business solutions division of the world famous improv comedy theater, The Second City, will teach attendees how to use the key principle of improv comedy to advance their programs. Centered on improving communication, executive presence and delivery, this session will give attendees dozens of tactics for increasing the effectiveness of group or one-on-one interactions. They will learn to get past the typical “no, but” mentality we often encounter in our workplaces and keep their audience listening and engaged around their ideas. Attendees will learn to flourish in the new working environment where collaboration and influence are often more critical than title or authority when it comes to getting things done.



# Thank You To Our Sponsors

NAEM would like to thank these companies for their generous support of the 23rd annual EHS Management Forum. Be sure to stop by their booths (listed on page 27) to see their latest offerings and learn how they can help you achieve your EHS and sustainability goals.

## PLATINUM SPONSORS



GOLD SPONSORS



## GREEN SPONSORS

**3E Co.**

**AEI Consultants**

**AM Conservation Group Inc.**

**BEAC** (The Board of Environmental, Health & Safety Auditor Certifications)

**BSI** (British Standards Institution)

**Bureau Veritas**

**CloudSDS Inc.**

**CMO Software**

**Geosyntec Inc.**

**Heritage Environmental Services LLC**

**Huco Consulting Inc.**

**Humantech Inc.**

**Redshift Technologies Inc.**

**RegAction**

**RegScan Inc.**

**Roux Associates Inc.**

**SafeTec Compliance Systems**

**TRC Companies Inc.**

**Trinity Consultants/T3**

**US Ecology Inc.**

**xOverTime**

## SPECIAL SUPPORT

Media Partners:

**environmental  
LEADER**



Association Partner:



University Partner:



Green Metrics Partner:





# Because you can't be everywhere.



## Partner with an EHS&S firm that is.

From Silicon Valley to Burkina Faso, down the street and across the globe, Antea Group's global consulting services provide local knowledge and fit-for-purpose solutions to improve performance, safety and sustainability.

Learn more at booth # 55.

CONTACT:  
DANIEL PIERCE, PE  
+1 508 736 2706  
DANIEL.PIERCE@ANTEAGROUP.COM



[www.anteagroup.com](http://www.anteagroup.com)

# Program Schedule

Tuesday, October 13

**8:00 a.m. - 5:00 p.m. NAEM Board of Regents Fall Leadership Meeting** *Grand Ballroom AB*

**8:30 a.m. - 3:00 p.m. Annual Pre-Forum Golf Event** *Ballantyne Hotel and Lodge*

Join your NAEM colleagues for a golf scramble at the beautiful Ballantyne Course at the Ballantyne Hotel and Lodge. This venue is a public, championship PGA course. Cost is \$70/person, includes greens fees, transportation and lunch.

Sponsored by:



**1:00 - 4:00 p.m. Seven Oaks Trail Clean Up**

Get outside and enjoy the natural beauty of the Charlotte area before the conference starts. Volunteer to help preserve a vital local ecosystem by eradicating invasive plant species and clearing and protecting the Seven Oaks Preserve Trail. Transportation will be provided to and from the hotel.

**1:00 - 4:00 p.m. Building a Better Business Case for Sustainability Investment Decisions** *Independence*

Does your organization need more reasons to believe investments in sustainability are the right choice for the business? Attendees will learn how to simplify and articulate seemingly complex business value creation opportunities, and how to quantify and monetize business benefits in ways that support more effective decision-making. All attendees will take away materials, methodologies and tools that can immediately be applied to help their organizations make better, more sustainable business decisions.

Sponsored by:



**2:00 - 7:00 p.m. Registration** *Providence Promenade*

**4:00 - 6:00 p.m. NAEM Affiliate Council Meeting** *Trade*

**5:30 - 7:00 p.m. CDP North America Climate Change Leadership Celebration Cocktail Reception** *Harris*

Join CDP and NAEM for a complimentary evening celebration to recognize the top CDP reporters for 2015 - cocktails and hors d'oeuvre will be served.

Hosted by:



Wednesday, October 14

**7:00 a.m. Registration Opens** *Providence Promenade*

**7:00 - 8:00 a.m. Breakfast** *Grand Ballroom*

**8:00 - 8:30 a.m. Welcome and Conference Introductions** *Providence Ballroom*

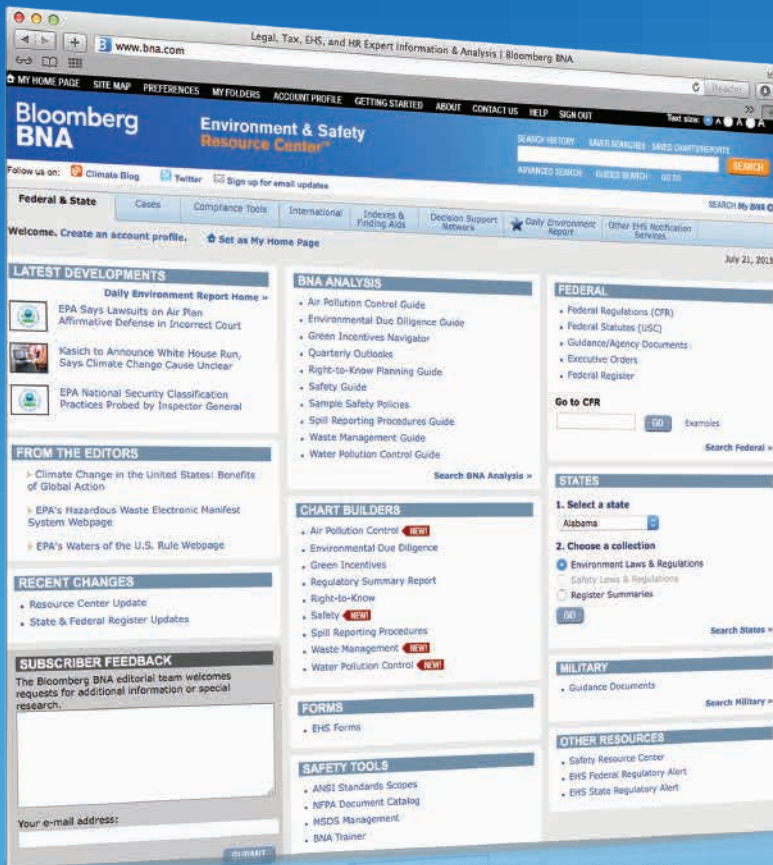
- **Carol Singer Neuvelt**, Executive Director; NAEM
- **Rick Taylor**, Vice President of Environment, Health and Safety; Parker- Hannifin Corp.
- **Megan Lum**, Director, Environment, Generation; The Pacific Gas and Electric Co.

**8:30 - 10:00 a.m. Path to Positive: Getting People Excited to Solve Climate and Sustainability Challenges** *Providence Ballroom*

The business world is changing. Sustainability is no longer a “nice to have.” For leading companies, it’s a business management paradigm that impacts all business decisions and redefines their purpose. EHS&S leaders are more important now than ever to the business community’s ability to turn the corner on what it means to be a sustainable company. In order to put their full weight behind this shift, EHS&S leaders must be able to catalyze engagement and inspire people throughout their companies, from the shop floor to the C Suite, to act. But how? President of ecoAmerica, Bob Perkowitz, will discuss how we can better engage and empower our organizations to action, and will share examples of trigger points that have led to meaningful action for corporations. Attendees will learn how to create a measurable and lasting increase in awareness, understanding and action among their colleagues and senior management. They will leave the session with new ideas, examples, and tools to help them understand and engage their organizations and broader communities to take leadership roles on these critical topics.

- **Robert M. Perkowitz**, President; ecoAmerica

# COMPLETE CONFIDENCE



## Environment & Safety Resource Center™

Your comprehensive source for environment, health and safety news, analysis, regulatory developments, and case law.

VISIT BLOOMBERG BNA AT  
**BOOTH 40** FOR A DEMO, FREE  
TRIAL, AND WEBINAR COUPON.

Learn more and try our products  
FREE at [www.bna.com/ehs](http://www.bna.com/ehs)

# Bloomberg BNA

# Program Schedule

Wednesday, October 14

10:00 - 10:30 a.m. Morning Break *Grand Ballroom*

10:30 a.m. - 12:00 p.m. Concurrent Sessions

## Session 1: Calculating and Communicating the Value of EHS&S Programs *Harris*

This session will provide EHS and sustainability leaders with strategies, tactics and psychology necessary for increasing the value and recognition of EHS and sustainability solutions across global business operations. This includes practical examples of how EHS&S leaders have successfully framed the value of EHS&S solutions to appeal to corporate decision makers as well as the presentation of a broader framework for calculating and communicating EHS&S value. If you're seeking to transform perception and status of EHS&S in a traditional corporate environment this session will provide you with the dos and don'ts for ensuring your programs are clearly recognized for the value they add.

- **Bruce Klafter**, Vice-President, Corporate Social & Environmental Responsibility; Flextronics International Ltd.
- **Mike Miller**, Vice President of EHS; Dean Foods Co.
- **Scott Tew**, Executive Director, Center for Energy Efficiency & Sustainability; Ingersoll-Rand plc

*Moderator:* **Rob Luchacher**, EH&S Director and Practice Leader; Cushman & Wakefield

## Session 2: Compliance Assurance: Brilliant at the Basics *Trade*

EHS managers today face increasingly stringent regulations, tight budgets, an aging workforce, shrinking EHS departments and increased responsibility. For the fundamental elements of EHS programs, such as regulatory and compliance tracking, permitting, auditing, and training; learn how companies are navigating these challenges to keep their EHS staff brilliant at the basic technical aspects of their jobs. You'll leave this session with lessons learned and proven strategies from companies who have found success through internal programs and practices.

- **Kisa Adkins**, Global Environmental Compliance Program Manager; Newell Rubbermaid Inc.
- **Tom Finley**, Senior Manager, Enterprise Workplace Safety & Health; The Boeing Co.
- **Julie Smoak**, Environmental Manager; Toyota Tsusho America Inc.

*Moderator:* **Fawn Bergen**, Senior Environmental Engineer; Intel Corp.

## Session 3: Understanding Global Regulatory Trends *Tryon*

Through the lens of successful global EHS&S leader's, attendees will learn to identify the major global compliance trends and how companies are planning for and meeting new global regulatory challenges. Attendees will glean actionable insights to benchmark organizational compliance programs. Stay ahead of global regulatory trends in the areas of Ecofees, recycling requirements for products and packaging, and GHG emissions.

- **Rachel Degenhardt**, Head of Global Services; Enhesa SA
- **Heike Naigur**, Senior Manager Environmental Services; Ryder Systems Inc.
- **Mike Morgan**, Group Environmental Director; BBA Aviation plc
- **Michelle Redfield**, Director, Safety, Environment & Process Improvement; Schneider Electric SE

*Moderator:* **JC Tabora**, Environmental and Sustainability Manager; Ryder Systems Inc.

## Session 4: Attract, Develop and Retain Top EHS&S Talent *Independence*

Our organizations are only as strong as our people. Sessions in this track will focus on how companies are developing their EHS staffs and ensuring they are prepared to attract and train the next generation of leaders in our field. It will also offer attendees insight on how to manage multigenerational teams as well as create training that's engaging and effective.

- **Deborah Briggs**, Global EHS Compliance and Systems Leader; Cargill Inc.
- **Marc Juaire**, Corporate EHS Director; Liberty Diversified International
- **Tom McWilliams**, Director EHS, Fort Hills Prokect; Suncor Energy Inc.

*Moderator:* **Monty Lovejoy**, Vice President; AECOM

12:00 - 1:15 p.m. Roundtable Discussions Luncheon *Providence Ballroom*



# We think a little differently.

## Because at CH2M, we dream big.

We take your most complex infrastructure and natural resource challenges. Turn them upside down and inside out. Solve them in ways nobody has thought of before. And help you achieve more than you imagined. Because we're driven to make a difference on your project. And in our world.

Visit [www.ch2m.com](http://www.ch2m.com)

Come see us at booth 48.



[www.ch2m.com](http://www.ch2m.com)



© 2015 CH2M HILL  
EN0709151000DEN

# ch2m.<sup>SM</sup>



# Program Schedule

Wednesday, October 14

## 1:30 - 3:00 p.m. Concurrent Sessions

### Session 5: Managing in a Water Stressed World *Independence*

What steps should you be taking to ensure your business has identified the major water-related risks to your operations? Do you know if your sites or supply chains are prepared for water shortages and water quality issues, for instance? Get practical and actionable ideas for mitigating water-related risks that reduce your water intensity, maintain your access to reliable, safe sources of water, and ensure business continuity even as water resources continue to dwindle in many regions.

- **Matt Howard**, Director; Alliance for Water Stewardship
- **Anne Jackson**, Principal, Environmental Policy; The Pacific Gas and Electric Co.
- **Jonathan Radtke**, Water Sustainability Program Director; The Coca Cola Co.

*Moderator:* **Chris England**, Director EHS; Xylem

### Session 6: Maximizing the Business Value of Management Systems and Conformance Standards *Harris*

With the proliferation of ISO standards, certification schemes, and reporting requirements that impact EHS and Sustainability, companies are challenged with whether to keep existing certifications, and how to integrate the complex needs in this area. This session will provide an update on ISO 14001 revisions, along with details on the anticipated new ISO 45001 standard on OHSMS. Presenters will share insights on how their organizations are responding to the evolving ISO regime and in turn developing internal standards that address ISO as well as requirements from entities such as GRI, IIRC and SAB.

- **Susan LK Briggs**, ISO TC207 Convenor for the revision of ISO14001; International Standards Organization (ISO)
- **Raj Chaudhry**, Program Manager Sustainability & Management Systems; BD & Co.
- **Alan Leibowitz**, former Head of EHS, Exelis Inc.

*Moderator:* **Charles Redinger**, President; Redinger 360

### Session 7: Best Practices for Operational Risk Assessment and Prioritization *Tryon*

Curious about how companies are performing their EHS Risk Assessment and Prioritization Process? Want to get different perspectives on this critical topic for enterprise risk management? This session will address how to identify, prioritize, communicate and manage key EHS operational risks. Attendees will get common approaches and frameworks for EHS Risk Assessment and Prioritization, and practical examples of these programs in operation.

- **Rodney Canada**, Vice President, Environmental Health, Safety and Sustainability; CP Kelco U.S. Inc.
- **Sulaiman Hamidi**, Director, Sustainability & Product Stewardship; Allergan
- **Mark Hause**, Corporate EHS Manager; DuPont Co.

*Moderator:* **David Williams**, Director, Environment and Sustainability; Teva Pharmaceuticals

### Session 8: Engaging and Managing a Multigenerational Workforce *Trade*

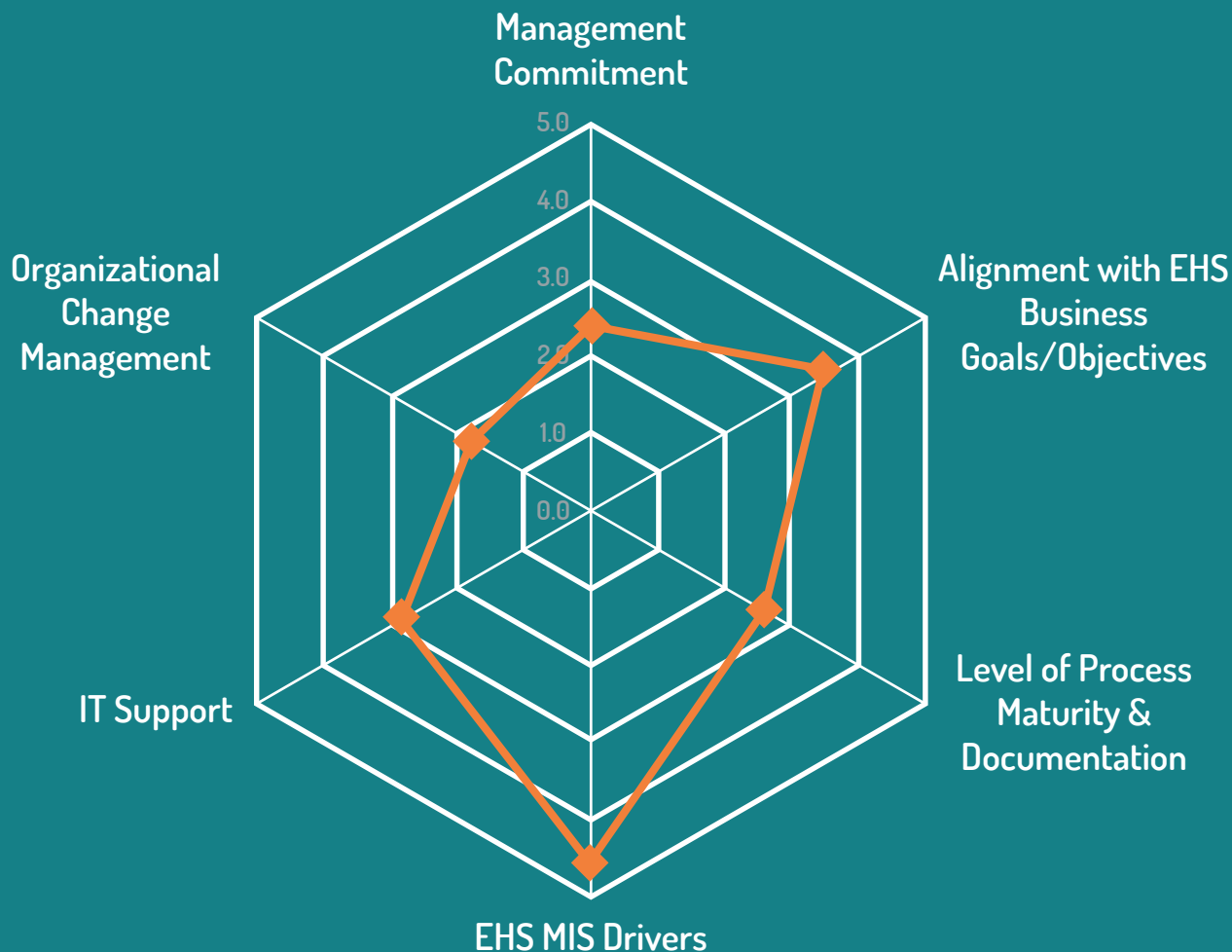
There are currently three, and sometimes four generations in the workforce. The dynamics of the multi-generational workforce are important to managers. This session will feature panelists who will address the biggest challenges resulting from the generational differences, these include: communication, work/life balance, and career expectations. The panelists will share their successes and lessons learned while leaving attendees with tips and tricks for how to best engage and manage a multigenerational workforce.

- **Drena Howard**, Director, Global Retail EHS; The Estee Lauder Company
- **Kelvin Roth**, Director, Corporate Environmental Health & Safety; CF Industries Inc.
- **Brad Waldron**, Director of Risk; Caesars Entertainment Corp.

*Moderator:* **Jenna Newcombe**, Senior Engineer; Geosyntec Consultants

3:00 - 3:45 p.m. Afternoon Break *Grand Ballroom*

# We have an exciting new assessment tool!



Our new tool is designed to help you to reach EHS MIS excellence – wherever you are in the process.

We are offering free 30 minute EHS MIS organizational assessments.

Join us at Booth 43 for more information and to sign up for our fun raffle.

**SEE YOU THERE!**

**E2MANAGETECH**

COLLABORATE | INNOVATE | DELIVER

# Program Schedule

Wednesday, October 14

## 3:45 - 5:15 p.m. Concurrent Sessions

### Session 9: Shrinking Your Corporate GHG Footprint *Trade*

This session will focus on interesting and innovative ways in which companies have reduced their greenhouse gas footprint while providing tangible business value. Going beyond traditional energy audits and other “low hanging fruit”, case studies in this session will feature low cost – high return benefits that are useful for companies of any size. Attendees will also learn how speakers got support for the projects, communicated the results and articulated the positive effects for different interest groups within a company – employees, shareholders, executives, and operations.

- **Alan Resnik**, Director, Corp. Environmental Management; Cummins Inc.
- **Hector Rodriguez**, Director, Global EHS & Sustainability; Biogen Inc.
- **Mike Williams**, Director of Employer Services; The Clean Air Campaign

*Moderator:* **Mike Morgan**, Group Environmental Director, BBA Aviation

### Session 10: Leveraging Supplier Engagement to Drive EHS & Sustainability Performance *Tryon*

Many companies identify supplier sustainability performance as an important concern, yet few equate sustainability programs with supplier price, quality and on-time delivery. This session will explore why some companies have decided to go “beyond questionnaires” and include specific EH&S and other performance criteria in determining whether suppliers get, or keep, their business. Presenters will discuss how they are engaging with suppliers, the mechanics of their supplier sustainability programs, and share their reasoning around the weight and importance of EHS & sustainability issues when establishing and assessing supplier relationships. Attendees will be challenged to consider whether or not their current supplier sustainability programs are on track to deliver improved sustainability performance, and critical steps they can take to ensure they do.

- **Judi Kovacs**, Vice President of Corporate Supplier Social Responsibility Programs; NBCUniversal Inc.
- **Jenny Levy**, Vice President, Corporate Social Responsibility; Hypertherm Inc.
- **Rick Love**, Manager, Environmental Sustainability; United Technologies Corp.

*Moderator:* **Tim Greiner**, Managing Director; Pure Strategies

### Session 11: Understanding Board Expectations: What do EHS&S Leaders Need To Know *Independence*

This session will give attendees a peak behind the boardroom doors and explore the new and emerging risks that corporate boards and shareholders are focused on and how EHS leaders can be prepared to address and manage those risks. From governance to enterprise risk management and sustainability, this session will help attendees understand how they need to be shaping their programs and addressing their board’s concerns. Attendees will also get insights and practical tips for how to present EHS risk information to their BOD members.

- **Carol Cala**, Vice President of EHS; Lockheed Martin Corp.
- **Libby Cheney**, Board of Directors; The Offshore Energy Center & PinkPetro, LLC
- **Thomas Day**, Chief Sustainability Officer; United States Postal Service

*Moderator:* **Kenny Ogilvie**, CEO; EHS Support

### Session 12: Next Generation Training *Harris*

This session will touch on three aspects of trends, challenges and solutions to environmental, health and safety and sustainability training. Learn about the latest in learning and organizational change, including the principles of gamification, brain science, microlearning and personal learning networks. This session will also feature concrete examples of companies that are innovative in their training programs - from delivery styles to engaging employees. Come away with ideas you can put to work in your own programs as well as an understanding of the spectrum of techniques and technologies critical to effective corporate training programs.

- **Allyson Corley**, Corporate EHSS Program Management Manager; Coca Cola Refreshments
- **Frank Marino**, Corporate EHS Manager; The Raytheon Co.
- **Jeff Merrell**, Associate Director, Learning and Organizational Change; Northwestern University

*Moderator:* **Michelle Redfield**, Director, Environment and Process Improvement; Schneider Electric SE

## 5:30 - 7:00 p.m. Welcome Reception *Grand Ballroom*

*Sponsored by:*

**Bloomberg  
BNA**

# Enabling the Sustainable Company

Streamline your  
EHS reporting  
and compliance  
processes

Minimize incidents,  
risks & loss events

Reduce your  
operational costs

Report to your  
stakeholders



**MEASURE  
MANAGE  
PROFIT**

Sustainability can be a juggling act, Enablon can help.  
Visit [www.enablon.com](http://www.enablon.com) to learn more.

**enablon**

# Program Schedule

Thursday, October 15

**7:00 a.m. Registration Opens** *Providence Promenade*

**7:30 - 8:15 a.m. Breakfast** *Grand Ballroom*

**8:15 - 8:30 a.m. Opening Remarks** *Providence Ballroom*

- **Virginia Hoekenga**, Deputy Director; NAEM
- **Kristin Morico**, Global Leader-Environmental Programs; GE

**8:30 - 10:00 a.m. Beyond Operations: Addressing Sustainability Expectations throughout the Value Chain** *Grand Ballroom*

Leaders of EHS and Sustainability can no longer focus exclusively on their operations. Stakeholders and society expect companies to reduce or eliminate their environmental and social impacts across their supply chains and the life cycles of their products, with a stretch goal of contributing net positive value back to society and the environment. It sounds like a tall order but the panelists in this session will discuss how they are tackling and delivering on these expectations. Attendees will get insights on how EHS&S leaders can find success through a more adept understanding and management of the “Corporate Ecosystem” and come away with strategies for success from three of the leading change-makers in our field.

- **Jonathan Atwood**, Vice President, Sustainability & Corporate Communications; Unilever plc
- **Paige Goff**, Vice President, Sustainability and Business Communications; Domtar Corp.

*Moderator:* **Tensie Whelan**, former President; Rainforest Alliance and future Director; NYU Stern Center for Sustainable Business

**10:00 - 11:00 a.m. Morning Break** *Grand Ballroom*

**11:00 a.m. - 12:30 p.m. Concurrent Sessions**

**Session 13: Leveraging NGO Partnerships to Advance Sustainability** *Harris*

It has become increasingly important for sustainability managers to leverage the expertise of a wide range of professionals in order to develop and execute their initiatives. This has led an increasing number of companies to partner with NGO’s in order to enhance the quality of their companies’ sustainability policies and credibility, while providing confidence to company management and customers. Although the private sector and NGOs are often motivated by different drivers, there are an increasing number of opportunities for collaboration between the two sectors. Attend this session and get examples of corporate/NGO partnerships that are yielding deep business value and real improvements for society and the environment. Come away with strategies and best practices for finding and establishing NGO partnerships that are the best fit for your business and tips for how to ensure success when partnering with NGOs.

- **Larry Deeney**, Senior Technical Leader, Global Environment; General Mills Inc.
- **Rachel Goldstein**, Global Sustainability Director Scientific and Regulatory Affairs; Mars Inc.
- **Sandy Nessing**, Managing Director, Sustainability & EHS Strategy & Design; American Electric Power Co. Inc.

*Moderator:* **Kevin Conroy**, Principal and Water Treatment Practice Leader; Golder Associates

**Session 14: Strategies for Safety Culture Reinvigoration** *Tryon*

How can organizations look at safety culture with fresh eyes? Are your safety indicators trending the wrong way? Has safety taken a back seat to other priorities? If so, it might be time to refresh your safety culture program. Learn the symptoms of safety culture decline, and hear what others have done to reinvigorate or recreate their programs.

- **Aaron Duff**, Director of EHS Standardization; Johnson & Johnson
- **Mike Lloyd**, Director, Environmental, Health, Safety, and Sustainability; Huber Engineered Woods
- **Frank Marino**, Corporate EHS Manager; The Raytheon Co.

*Moderator:* **Annette Russo**, Manager, Communications, Training-Worldwide EHS; Johnson & Johnson



# the simple way to accelerate EHS success

MSDSonline and KMI have teamed up to create a new kind of EHS software company.

One that helps you reach your environmental, health, safety and sustainability goals faster by delivering relevant cloud capabilities through a single EHS solution.

One that is more cost-effective, quicker and easier to implement, and provides the simplest user experience for you and your teams.

We believe simplicity is the key to driving user engagement. When you deploy our tools to achieve company-wide engagement in your EHS programs, you can more easily identify and manage risks.

That's why more than 8 million users from virtually every industry trust our solution to improve EHS performance.

Our approach has always centered on partnering with you to ensure we are all working from a clear set of business objectives that deliver value and empower you to be an EHS leader.

We pride ourselves on delivering unparalleled customer support; on taking the time to listen to you and giving you expert advice and best-practice approaches to solving your EHS challenges. It's this level of responsiveness that sets us apart.

Legacy solutions can be overly complicated, slow and risky to implement, cumbersome to use and rarely deliver their intended value.

It's time for a simple solution, one that makes enterprise-level EHS functionality accessible and affordable to any size business. It's time for a new direction.

It's time for *velocityEHS*.

**learn more at booth #26**

[www.velocityEHS.com](http://www.velocityEHS.com)



# Program Schedule

Thursday, October 15

## Session 15: Changing Climate Means Changing Risk *Independence*

How do you plan for potential upticks in injury rates, property damage, and business interruption that could result from shifting weather patterns without increasing the cost of doing business? If your organization is exposed and potentially subject to any of these impacts, planning and control programs must adapt to “the new normal.” Attendees will leave the session hearing current best practices from organizational leaders who have initiated programs to protect their assets without negatively impacting the bottom line.

- **Carl Gerhardtstein**, Director Environmental Systems; CSX Corp.
- **Joey Freeman**, Senior Vice President of Risk Control; Beecher Carlson
- **Rob McMullen**, President; Paragon Risk Engineering

*Moderator:* **Brad Waldron**, Director of Risk; Caesars Entertainment Corp.

## Session 16: Building Product Stewardship Capacity: Ensuring You’ve Got the Skills and Capacity to Manage Product Risk Issues *Trade*

How do global companies organize and staff their product compliance and stewardship obligations to address emerging regulatory and customer requirements, expanding product lines, distribution, and geographies? Unlike traditional EHS programs that have evolved over several decades with best practices, industry standards, and management systems, product stewardship programs are relatively young with little industry-wide or cross sector standards. This session will feature different industry sector examples of how global companies are structuring and staffing product stewardship programs to manage business risks and opportunities. These examples will highlight the variety of organizational approaches companies have taken to address product stewardship and the optimal mix of in-house vs. consulting staff they’ve leveraged to expand their reach and address complex regulatory requirements.

- **Mark Cates**, Director, Corporate Environmental Control; Corning Inc.
- **Tom Grumbles**, Senior SHE Specialist, US Mega Projects; Sasol Limited
- **Greg Porta**, Director Global Product Stewardship; SABIC

*Moderator:* **Sarah Medearis**, Partner; Environmental Resources Management (ERM)

**12:30 - 1:30 p.m. Business-to-Business Luncheon** *Providence Ballroom*

## 1:45 - 3:15 p.m. Concurrent Sessions

### Session 17: All About Sustainability Metrics – Beyond EHS *Harris*

As internal and external stakeholders continue to challenge organizations to increase transparency around Corporate Sustainability, EHS leaders are asked to organize and report on metrics beyond our traditional practice areas. Attend this session to learn about emerging trends in sustainability reporting, how to facilitate the collection and management of non-traditional metrics, and innovative strategies on sustainability reporting.

- **Amath Gomis**, Senior Sustainability Manager; AT&T Inc.
- **Markus Lehni**, Global Head Environment and Energy; Novartis
- **Paul Narog**, Manager, Environmental Operations; 3M Co.

*Moderator:* **Sulaiman Hamidi**, Director, Sustainability & Product Stewardship; Allergan

### Session 18: Maximizing the ROI of Consultant Partnerships *Trade*

EHS&S Managers are faced with the demands of increasing responsibilities with fewer resources. Using external consultants is often the choice EHS&S Managers use to bridge the gap. But how do you manage this relationship to get what you pay for and even more? Attendees will hear perspectives from EHS&S managers that use consultants for a variety of reasons to help manage some of these growing tasks. Participants will learn about how to manage consultancy relationships and how to maximize the value proposition and benefits of this outside resource.

- **Megan Lum**, Director, Environment, Generation; The Pacific Gas and Electric Co.
- **Lisa Shpritz**, Senior Vice President, Environmental Operations Executive, Global Environmental Group; Bank of America Corp.
- **Allen Stegman**, General Director, Environmental; The BNSF Railway

*Moderator:* **Kristen Dickey**, General Manager, Environmental; WSP



# WASTE HAS VALUE

MAXIMUM EFFICIENCY.  
ZERO LANDFILL.

At Northstar Recycling, we believe that sending reusable resources to a landfill is bad for business and bad for the environment. We put our expertise to work for you, creating customized recycling solutions designed for maximum sustainability and profitability.

VISIT US AT **BOOTH 49** TO LEARN MORE.

**Contact:**

Noah Goodman, President  
413-263-6002 [ngoodman@nsrecycle.com](mailto:ngoodman@nsrecycle.com)  
[www.NorthstarRecycling.com](http://www.NorthstarRecycling.com)

DOING THE RIGHT THING PAYS OFF



**NORTHSTAR  
RECYCLING**

# Program Schedule

Thursday, October 15

## Session 19: Managing EHS Risk During Corporate Change *Tryon*

Whether you are dealing with a merger, acquisition, layoff or reorganization, the potential for critical EHS management tasks to fall through the cracks increases during times of change. This session will showcase companies who are dealing with these types of changes and the strategies and processes they are putting into place to ensure EHS cultures are being integrated, roles and responsibilities are reassigned, and compliance efforts don't lapse, even in the face of workforce reductions.

- **Nan Bangs**, Director Safety, Health & Risk Reduction; UTC Aerospace Systems
- **Fawn Bergen**, Corporate Air Program Senior Environmental Engineer; Intel Corp.
- **John Flatley**, Senior Manager, Industrial Hygiene; Ashland Inc.

*Moderator:* **Curt Michols**, Principal Specialist; Abbott Laboratories

## Session 20: Mobile Technologies Revolutionizing Employee Engagement *Independence*

Over 2 billion smartphones will be in use by 2016 in the United States. Use of mobile technologies is not a generational thing – It's an immediacy of information thing. Real-time capture of key information on the shop floor and in the field, along with real-time insights into site and company-level performance is weaving EHS into the daily activities of employees across all functions. Gain insights into strategies and best practices for taking EHS to the masses as our cross-industry panel shares lessons learned and roadmaps for leveraging mobile technologies to drive employee engagement and EHS performance.

- **Marcia Fournier**, Environment and Chemical Manager; NSK Americas Inc.
- **Anthony Salvatore**, Global Health and Safety Leader; Ingersoll-Rand plc
- **Kim L. Willingham**, Senior EH&S Specialist; Comcast Corp.

*Moderator:* **Donovan Hornsby**, Vice President; Gensuite

## 3:15 - 3:45 p.m. Afternoon Break *Grand Promenade*

## 3:45 - 5:15 p.m. Advancing Sustainability using Creativity, Collaboration and the Principles of Improv Comedy

*Providence Ballroom*

This exciting interactive keynote, put on by Second City Works, the business solutions division of the world famous improv comedy theater, The Second City, will teach attendees how to use the key principle of improv comedy to advance their programs. Centered on improving communication, executive presence and delivery, this session will give attendees dozens of tactics for increasing the effectiveness of group or one-on-one interactions. They will learn to get past the typical "no, but" mentality we often encounter in our workplaces and keep their audience listening and engaged around their ideas. Attendees will learn to flourish in the new working environment where collaboration and influence are often more critical than title or authority when it comes to getting things done.

*Presented by:*

**The Second City**  
**WORKS**

## 6:30 - 10:00 p.m. Thursday Evening Networking and Dinner Event *Howl at the Moon*

Just a short walk from the hotel, join your colleagues for dinner, drinks, networking and live music at Charlotte's favorite downtown night spot, Howl at the Moon. Get on the dance floor or sing-along with favorite pop songs from all decades. You are sure to have a great time relaxing with old friends and new! *Tickets are \$85 per person and are available at the registration desk.*



# ProcessMAP

## SUSTAINABILITY & SAFETY MANAGEMENT PLATFORM



Managing sustainability and safety is highly complex. Your software shouldn't be. With ProcessMAP's integrated platform, you can reduce risk, boost performance and decrease time spent on manual tasks by up to 50%.

Visit us at [www.processmap.com](http://www.processmap.com) or call us at 954.515.5040

**VERDANTIX**  
Leaders Quadrant





# Program Schedule

Friday, October 16

9:00 - 9:30 a.m. **Grab-and-Go Pastries and Coffee** *Providence Promenade*

8:30 - 9:30 a.m. **Women's Leadership Networking Breakfast** *Sharon*

Join your EHS&S peers for a lively networking breakfast. The cost is \$49/person. Attendees can sign up at the registration desk while tickets last.

9:30 - 11:30 a.m. **NAEM Board of Directors Meeting** *Brevard/34th Floor*

9:30 - 11:00 a.m. **Discussion Groups**

Friday morning will offer attendees a variety of issue-specific discussion groups. These discussion groups are open to all and included in your conference registration.

- **Zero Waste** *Providence I*

Hear case studies from Intel and Procter & Gamble on their zero waste initiatives. Then join peers to discuss how companies are defining zero waste parameters, setting goals and making progress on their programs

- **Key Competencies and Career Profiles for EHS&S Professionals** *Providence II*

Join NAEM for an interactive discussion of results from the association's 'Career Profiles' report, its latest benchmark of the core competencies for EHS professionals at each stage of their career. This in-depth research report combines survey data with insights from interviews with NAEM members to explain the career paths of an EHS leaders. You'll learn which skills and knowledge areas you should be cultivating to get to the next level and engage with your peers to map out strategies for advancement.

- **IGNITE: Learn to develop presentations and trainings that engage and inspire your audience!** *Providence III*

Effective training must be impactful, and often times short. IGNITE is a micro learning tool that allows the user to quickly engage their audience and helps the presenter drive to the key points. This session will teach attendees about the tool, provide time to workshop their own ideas and get feedback from peers.

11:30 a.m. **Conference Adjourns**

## PARTNERING MORE POWERFULLY



### Services to Industry:

- Acquisition & Divesture Due Diligence
- Air Quality
- Architecture/Building Engineering
- Climate Adaptation/Resilience
- Design & Construction Management
- EHS Management/Auditing
- Energy Auditing/Management
- Impact Assessment/Permitting
- Natural Resources
- Remediation
- Sustainability Consulting
- Water & Wastewater EPCM
- Value Engineering

### AECOM – Your Full-Service Partner

AECOM provides worldwide reach and unparalleled technical breadth and depth. We understand our clients' needs and develop innovative solutions for their requirements and challenges. With continuing cost pressures on business, our tactical approaches allow our clients to continue advancing their environmental, energy and safety programs and invest in a sustainable future.

Monty Lovejoy  
978.905.2291  
askenvironment@aecom.com  
www.aecom.com





REDINGER 360

## RISK MANAGEMENT SOLUTIONS

Redinger 360 provides EHS/Sustainability leaders and teams with risk management solutions that are designed to strengthen their company's resilience and ability to flourish.

Based on our 360 Perspective Risk Management model, our solutions increase an organization's effectiveness in anticipating, seeing, and responding to emerging risks.

- 360 EHS/S Check-Up
- 360 Perspective Workshop
- R360 Risk Management System
- 360 Annual Meeting

---

### NEW WHITE PAPER

*Making Sense of the New Risk Requirements in ISO 14001:2015*  
by Enlar Compliance Services and Redinger 360

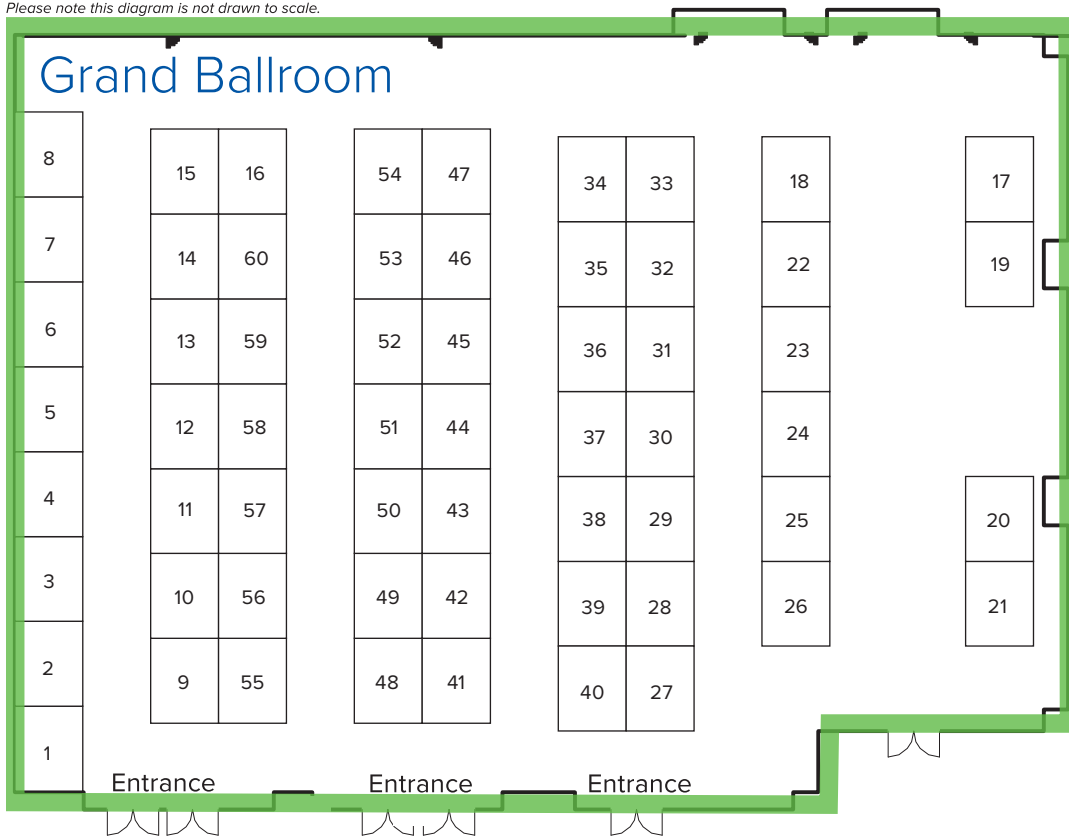
Booth  
**#27**

**Visit us at booth #27 to learn more.**  
Call or text 978.729.9102 to set up an appointment.

978.456.8105 • [cfr@redinger360.com](mailto:cfr@redinger360.com) • [redinger360.com](http://redinger360.com)

# 2015 Exhibit Floor Plan

Please note this diagram is not drawn to scale.



## Exhibit Hall Hours

### Wednesday, October 14

- Breakfast ..... 7:00 - 8:00 a.m.
- Morning Break ..... 10:00 - 10:30 a.m.
- Roundtable ..... 12:00 - 1:15 p.m.
- Discussions Luncheon
- Afternoon Break ..... 3:00 - 3:45 p.m.
- Networking ..... 5:30 - 7:00 p.m.
- Reception

### Thursday, October 15

- Breakfast ..... 7:30 - 8:15 a.m.
- Morning Break ..... 10:00 - 11:00 a.m.
- Exhibitor ..... 12:30 - 1:30 p.m.
- Business-to-Business Luncheon

## Exhibitor Booths

3E Co. ....	<b>Booth 47</b>	Humantech Inc. ....	<b>Booth 21</b>
AECOM .....	<b>Booth 10</b>	IHS Global Inc. ....	<b>Booth 11</b>
AEI Consultants .....	<b>Booth 33</b>	Intelix Technologies .....	<b>Booth 18</b>
AM Conservation Group Inc. ....	<b>Booth 6</b>	KMI .....	<b>Booth 26</b>
AMEC Foster Wheeler Environment & Infrastructure Inc. ....	<b>Booth 38</b>	Locus Technologies .....	<b>Booth 52</b>
Antea Group .....	<b>Booth 55</b>	Medgate Inc. ....	<b>Booth 12</b>
Applications International Corporation .....	<b>Booth 29</b>	MWH Global .....	<b>Booth 4</b>
ARCADIS .....	<b>Booth 57</b>	NorthStar Recycling .....	<b>Booth 49</b>
BEAC .....	<b>Booth 35</b>	Perillon Software Inc. ....	<b>Booth 25</b>
Bloomberg BNA .....	<b>Booth 40</b>	ProcessMap Corp. ....	<b>Booth 1</b>
BSI .....	<b>Booth 54</b>	Red-on-line .....	<b>Booth 24</b>
Bureau Veritas .....	<b>Booth 8</b>	Redinger 360 Inc. ....	<b>Booth 27</b>
CH2M Hill .....	<b>Booth 48</b>	Redshift Technologies Inc. ....	<b>Booth 19</b>
CHWMEG Inc. ....	<b>Booth 42</b>	RegAction .....	<b>Booth 17</b>
Civil & Environmental Consultants Inc. ....	<b>Booth 44</b>	RegScan Inc. ....	<b>Booth 53</b>
CloudSDS Inc. ....	<b>Booth 7</b>	Roux Associates Inc. ....	<b>Booth 32</b>
CMO Software .....	<b>Booth 20</b>	SafeTec Compliance Systems .....	<b>Booth 34</b>
CRedit360.....	<b>Booth 58</b>	Schneider Electric.....	<b>Booth 9</b>
Dakota Software Corp. ....	<b>Booth 46</b>	Sitehawk.....	<b>Booth 3</b>
E2 ManageTech .....	<b>Booth 43</b>	Stericycle Environmental Solutions Inc. ....	<b>Booth 13</b>
Enablon .....	<b>Booth 41</b>	Tradebe Environmental Services .....	<b>Booth 37</b>
Enhesa .....	<b>Booth 2</b>	TRC Companies Inc. ....	<b>Booth 5</b>
ERM .....	<b>Booth 45</b>	Trinity Consultants/T3 .....	<b>Booth 22</b>
ETQ Inc. ....	<b>Booth 30</b>	UL Workplace Health & Safety .....	<b>Booth 36</b>
Gensuite LLC .....	<b>Booth 28</b>	US Ecology Inc. ....	<b>Booth 60</b>
Geosyntec Consultants Inc. ....	<b>Booth 15</b>	Veolia North America .....	<b>Booth 50</b>
Golder Associates .....	<b>Booth 59</b>	Woodard & Curran .....	<b>Booth 56</b>
Haley & Aldrich Inc. ....	<b>Booth 51</b>	Workiva.....	<b>Booth 23</b>
Heritage Environmental Services LLC .....	<b>Booth 14</b>	WSP.....	<b>Booth 39</b>
Huco Consulting Inc. ....	<b>Booth 31</b>	xOverTime .....	<b>Booth 16</b>





# Driving toward sustainability?

We'll get you there.

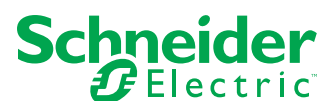
Our Energy & Sustainability Services team provides guidance at every turn. And with our award-winning software, Resource Advisor, you'll be on a clear path toward sustainable success.

Learn how sustainability reporting can lead to improved business performance. Download your free white paper:

[secontact.com/naem](https://secontact.com/naem)



See, measure, and manage your energy and sustainability goals with Resource Advisor.



# Sponsor Listing

## Meet Your EHS and Sustainability Partners

NAEM is proud to introduce you to the outstanding EHS and sustainability experts who have generously supported this year's conference. We hope you'll take some time to discuss your challenges with them and learn how they can help you achieve your goals.



**3E Co.**  
**Booth 47**  
3207 Grey Hawk Ct, Ste 200  
Carlsbad, CA 92010, USA  
[www.3ecompany.com](http://www.3ecompany.com)  
760-602-3220

3E Company is the trusted global provider of chemical, regulatory and compliance information services, including supply chain and EH&S product intelligence and risk management solutions, including:

- Supply Chain Product Compliance (Conflict Minerals, REACH, RoHS and more)
- Global chemical regulatory data
- SDS authoring, distribution, management
- Transportation
- Emergency response
- Regulatory reporting
- Waste management
- Professional Services (TSCA, DGSA, CDR Reporting and more).

**AECOM**  
**Booth 10**  
**GOLD SPONSOR**  
259 Apollo Dr  
Chelmsford, MA 01824  
[www.aecom.com](http://www.aecom.com)  
978-905-2100

AECOM is a global provider of technical and management support to markets including facilities, environmental, energy, water, transportation and government. With the acquisition of URS, AECOM now has 100,000 employees and is serving clients in 150 countries. As a leading environmental, architectural, consulting, engineering and construction service provider to the industrial sector, we work with companies on sustainability goals, plant engineering, regulatory compliance, environmental protection, site restoration, facilities management and worker safety. [www.aecom.com](http://www.aecom.com)

**AEI Consultants**  
**Booth 33**  
2500 Camino Diablo  
Walnut Creek, CA 94597  
[www.aeiconsultants.com](http://www.aeiconsultants.com)  
925-746-6000

AEI Consultants is an employee owned full service firm specializes in environmental due diligence and engineering, energy consulting, site investigation and remediation, industrial hygiene, and construction management. Founded in 1992, with 20 offices across the United States, AEI Consultants has been recognized as one of the nation's fastest-growing environmental firms.

**AM Conservation Group Inc.**  
**Booth 6**  
2301 Charleston Regional Pkwy  
Charleston, SC 29492  
[www.amconservationgroup.com](http://www.amconservationgroup.com)  
843-971-1414

AM Conservation Group, Inc. is the leading expert in energy and water efficiency solutions offering over 1,000 products designed to provide maximum value for a client's investment. The company has facilitated some of the largest and most effective energy programs for utility companies, program managers, and government agencies.

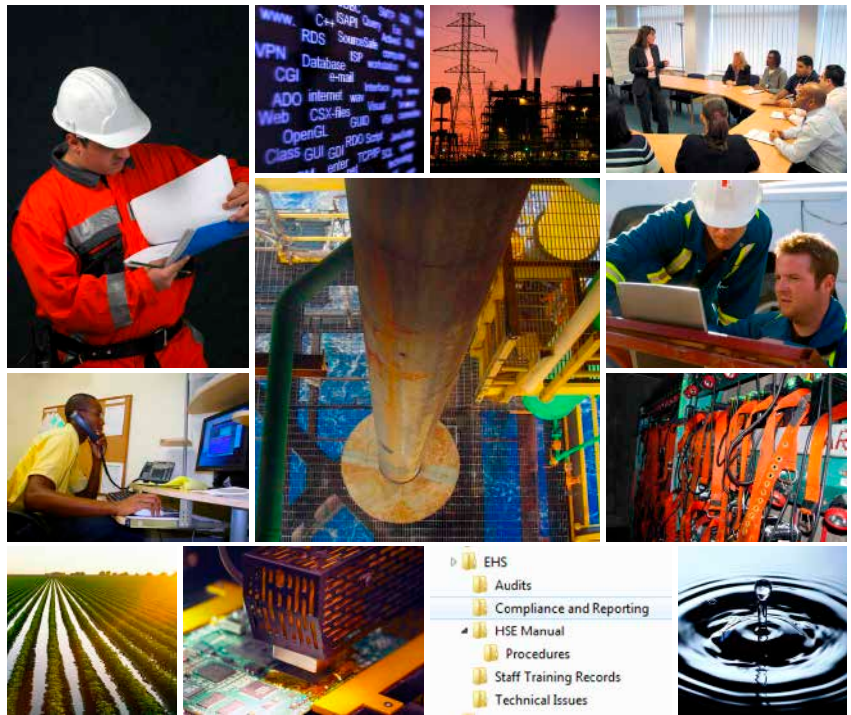


# Delivering the Sustainable EHS Solutions Industry Relies On

ERM is a leading global provider of environmental, health, safety, risk, social consulting and sustainability-related services.

We have more than 5,000 people in over 40 countries and territories working out of more than 150 offices.

[www.erm.com](http://www.erm.com)



*The world's leading sustainability consultancy*



## Empower your Operational Excellence Program with IHS



### Where are you looking to drive improvements?

- Process Safety
- Risk Assessments such as PHAs and JSAs
- Management of Change
- Quality Risk Processes such as FMEAs
- Environmental Performance
- EHS Compliance
- Product Compliance & SDS Authoring
- Chemical Management

Join a community of industry leading companies who partner with IHS and leverage our proven software, robust content, and recognized deployment expertise to achieve meaningful results in EHS performance.

Visit us at booth #11 to gain insight on what can be accomplished with IHS solutions.

**Assure Compliance. Drive Efficiencies. Improve Performance.**

Learn more at [www.ihs.com/industry/environmental-health-safety-sustainability.html](http://www.ihs.com/industry/environmental-health-safety-sustainability.html)

9745-JH-0815



# Sponsor Listing

## AMEC Foster Wheeler Environment & Infrastructure Inc.

**Booth 38**  
**GOLD SPONSOR**

271 Mill Rd  
Chelmsford, MA 01824  
www.amecfw.com  
978-692-9090

Amec Foster Wheeler Environment & Infrastructure, a full-service global consulting firm, provides solutions for all aspects of environmental, health, safety, sustainability and engineering services. With more than 7,000 specialists located in 266 offices worldwide, Amec Foster Wheeler's range of services includes site investigation and remediation, environmental permitting and regulatory reporting/compliance, environmental health and safety compliance auditing, environmental management systems (ISO 14001), water resource management, industrial hygiene, due diligence, risk management, product stewardship, and training services.

**Antea Group**  
**Booth 55**  
**PLATINUM SPONSOR**  
5910 Rice Creek Parkway  
Suite 100  
St Paul, MN 55126  
www.anteagroup.com  
803-371-6360

Antea®Group provides environmental, health, safety and sustainability consulting that combines innovation with integrity, integrates local support with global perspectives and unites technical expertise with superior project management to deliver results-focused sustainable business solutions for our clients worldwide. With access to more than 3,500 employees in over 75 offices and experience on 6 continents, we serve clients ranging from global energy companies and manufacturers to national governments and local municipalities. For more information, visit our website [www.anteagroup.com](http://www.anteagroup.com).

**Applications International Corp.**  
**Booth 29**  
**GOLD SPONSOR**  
10920 Via Frontera, Ste 400  
San Diego, CA 92127  
www.applicationsinternational.com  
858-673-2174

AIC is the global leader in web-based Enterprise Compliance Management and Reporting Systems, with the highest level of functionality in the industry. We offer over 40 different modular solutions for environmental, health, safety, and risk management professionals. Our solutions are multi-lingual, scalable, and mobile enabled. One look at our demo and you will see why we are the leader in our industry.

**ARCADIS**  
**Booth 57**  
**GOLD SPONSOR**  
6723 Towpath Rd, PO Box 66  
Syracuse, NY 13214  
www.arcadis-us.com  
315-446-9120

ARCADIS is the leading global natural and built asset design and consultancy firm working in partnership with our clients to deliver exceptional and sustainable outcomes through the application of design, consultancy, engineering, project and management services. ARCADIS differentiates through its talented and passionate people and its unique combination of capabilities covering the whole asset life cycle, its deep market sector insights and its ability to integrate health & safety and sustainability into the design and delivery of solutions across the globe.



connected  
excellence  
in all we do



## Delivering excellence in Environment & Infrastructure

Amec Foster Wheeler provides solutions for all aspects of environmental, health, safety, sustainability, and engineering services. We help our clients achieve EHS excellence by delivering high value project lifecycle services.

We are committed to **partnering** with our customers to make your business more **efficient, profitable, and safe** by **reducing environmental impacts**.

Oil & Gas | Clean Energy | Environment & Infrastructure | Mining

[amecfw.com](http://amecfw.com)

# Sponsor Listing

## BEAC

**Booth 35**  
247 Maitland Ave  
Altamonte Springs, FL 32701  
www.beac.org  
407-831-7727

BEAC is an independent certification board for EHS auditors, whose certification programs promote high standards of ethical practice and professional competence. Auditors are required to adhere to a Code of Ethics and recertify every two years. BEAC grants the Certified Professional Environmental Auditor (CPEA) designation to qualified auditors under four specialties: Environmental Compliance, Health & Safety, Management Systems, and Responsible Care®. Most recently, BEAC introduced the Certified Process Safety Auditor (CPSA) designation.

## Bloomberg BNA

**Booth 40**  
**PLATINUM SPONSOR**  
1801 S. Bell St.  
Arlington, VA 22202  
www.bna.com  
703-341-5966

Bloomberg BNA is your premium source for objective EHS news, expert analysis, compliance tools and practical guidance. We track environment, health and safety laws, regulations, policies, court decisions, and trends at the federal, state, and international levels – and we deliver the information in a customizable format to meet your needs. Stop by booth #40 and see how Bloomberg BNA can help your business run effectively while meeting its EHS compliance obligations.

## BSI

**Booth 54**  
12950 Watergate Dr. Suite 800  
Herndon, VA 20170  
www.bsiamerica.com  
800-862-4977

BSI's legacy of making excellence a habit™ has made us a leading global provider of services designed to protect and grow businesses of every size and in every sector. We enhance an organization's management system by helping to solve problems using our full suite of services—Training, Assessment, and Business Improvement Software. The power of our portfolio, expertise, and passion can provide the gateway to excellence inside an organization.

## Bureau Veritas

**Booth 8**  
1601 Sawgrass Corporate Pkwy  
Ste 400  
Ft Lauderdale FL 33323  
www.us.bureauveritas.com  
888-357-7020

Bureau Veritas, a global company specializing in the fields of quality assurance, health, safety, and environmental (QHSE) services, boasts 66,000 employees worldwide with unsurpassed technical and local expertise. With over 6,000 QHSE professionals in over 100 offices across North America, and operations in over 1,330 offices in 140 countries, Bureau Veritas develops solutions that contribute to risk prevention and performance improvement to help organizations create long-term value through our technical and regulatory expertise.

haleyaldrich.com

## Novel approaches for a better result.

### That's the Haley & Aldrich way.

Haley & Aldrich's Operations Risk & Compliance team goes beyond conventional environmental, health and safety regulatory compliance to ensure your operations run like clockwork. Our practice builds on six decades of expertise in infrastructure, environmental, health and safety compliance, process engineering, and legacy site management to deliver solutions with more value to help your organization ensure business continuity, protect the brand, and reduce your total cost of operations.

#### For more information, contact:

Anthony Noce  
Principal Consultant,  
Operations Risk & Compliance Practice  
anoce@haleyaldrich.com  
(518) 466.5608

#### OUR SERVICES

Engineering  
Environmental  
Construction  
Planning, Permitting & Compliance  
Sustainability & Resilience  
Operational Excellence  
Forensics & Litigation Support

**HALEY  
ALDRICH**



**CH2M Hill**  
**Booth 48**  
**PLATINUM SPONSOR**  
 9191 S. Jamica St  
 Englewood, CO 80112  
 www.ch2m.com  
 813-685-1497

CH2M is a global leader in full-service consulting, design, design-build, operations and program management services. We love to tackle complex challenges and know that our best solutions come out of close, trusted partnerships with our clients and the communities we touch. With US\$5.5 billion in revenue and over 25,000 employees, we deliver innovative, cost effective, sustainable solutions to over 5,000 clients in more than 50 countries positively impacting over 10,000 communities.

**CHWMEG Inc.**  
**Booth 42**  
**GOLD SPONSOR**  
 470 William Pitt Way  
 Pittsburgh, PA 15238  
 www.chwmeg.org  
 412-826-3056

CHWMEG conducts comprehensive reviews of waste vendors, recycling vendors, e-scrap processors, and spent material processors worldwide. CHWMEG's 780+ members receive high quality, detailed, objective information concerning potential business risk at reviewed facilities. A unique cost sharing approach provides significant member savings (cumulative member savings of over \$51 million is documented!). Members additionally benefit from networking at CHWMEG meetings and outreach activities. Stop by our booth and learn how CHWMEG membership can improve your environmental/waste stewardship program!

**Civil & Environmental Consultants Inc.**  
**Booth 44**  
**GOLD SPONSOR**  
 333 Baldwin Rd  
 Pittsburgh, PA 15205  
 www.cecinc.com  
 800-365-2324

Civil & Environmental Consultants, Inc. (CEC) provides environmental services for a wide range of industries and businesses including power plants, mining facilities, industrial manufacturing sites, law firms, and real estate companies. CEC conducts environmental assessments, site investigation/site remediation, air quality services, and other general compliance auditing and compliance support services. Occupational Health & Safety support includes management systems; health, safety and industrial hygiene services; process safety management/risk management planning services; and information technology and data management.

**CloudSDS Inc.**  
**Booth 7**  
 1055 West 7th St, 33rd Floor  
 Los Angeles, CA 90017  
 www.cloudsds.com  
 877-974-4666

CloudSDS offers a suite of innovative and efficient solutions that empowers clients to reduce complexity and improve performance for business functions related to global Environment Health & Safety (EH&S). Businesses that deal with manufacturing, distribution, transportation, usage and disposal of chemicals and products realizes significant savings by using cloud-based SaaS products and services. CloudSDS products and services helps clients identify and reduce risks and liabilities. The guiding principle of CloudSDS is to reduce complexity, simplify workflow and make workplaces safer.

## WE HATE TO TOOT OUR OWN HORN. SO WE LET OUR CLIENTS DO IT FOR US.

"At Ford Motor Company I used AIC for safety reporting. When I became the EHS Manager at Sherwin Alumina, I looked at other solutions and chose AIC."

*Paul English, EHS Manager, Sherwin Alumina*

"Suzlon is the company where I have utilized AIC management and reporting solutions. My experience with AIC has shown it to be a direct contributor to enhancing HSE performance"

*- Todd Karasek, Vice President of Environment, Health and Safety at Suzlon Wind Energy Corporation, N.A.*

"At Cooper Industries we used AIC for Incident Reporting and Audit management. When I became Director at Brunswick Corporation I looked at other solutions and chose AIC."

*- David Lutz, P.E., Director, Environmental Health & Safety at Brunswick Corporation*

One look at our demo will change the way you manage safety and compliance forever.

Call toll-free **855-242-6969** to schedule your demo today.  
[www.Applicationsinternational.com](http://www.Applicationsinternational.com)

**Applications**  
 International Corporation



Proud Donor



# Sponsor Listing

## CMO Software

**Booth 20**  
Northridge Center 1  
365 Northridge Rd, Ste 250  
Atlanta, GA 30350  
www.cmo-software.com  
678-388-9439

CMO provides one of the most comprehensive offerings on the market for Environmental, Health & Safety Management software solutions. The product offering, CMO COMPLIANCE, is specifically designed to manage end to end EHS processes across organizations. CMO is recognized as a visionary provider of eGRC & HSEQ solutions by Gartner, with the best mobile app and incident management solution. Automate your business's EHS Management with the trusted leader in EHS Software, CMO.

## cr360

**Booth 58**  
**GOLD SPONSOR**  
350 W. Ontario Street  
3rd floor  
Chicago, IL 60654  
www.credit360.com  
312-363-3600

cr360 helps companies to accurately capture, manage and analyse environmental, safety, supplier and social data; providing a 360° view on their sustainability performance. Our modular web-based platform allows our clients to seamlessly integrate all aspects of EHS and Sustainability data management across multiple regions and business units, and rapidly share results with employees and external stakeholders. For more information visit [www.cr360.com](http://www.cr360.com).

## Dakota Software Corp.

**Booth 46**  
**GOLD SPONSOR**  
1375 Euclid Ave, Ste 500  
Cleveland, OH 44115  
www.dakotasoft.com  
216-765-7100

Founded in 1988, Dakota Software introduced the first software product specifically designed to support EHS compliance. Now the market leader, our ProActivity™ Suite helps put global EHS efforts in-step, providing insight to decision makers and authorized guidance to field operators. By pushing compliance to the points of control, our Mobile Workflows extend the total reach of the ProActivity™ Suite to help organizations eliminate uncertainty and achieve their corporate responsibility goals.

## E2 ManageTech

**Booth 43**  
**PLATINUM SPONSOR**  
5001 Airport Plaza Dr. Ste. 260  
Long Beach, CA 90815  
www.e2managetech.com  
281-491-8840

At E2 ManageTech (E2), we believe that acting as champions for our clients' results in greater rewards and success. We are committed to doing what's right – partnering with clients and consistently delivery top-tier service and solutions. Through our critical thinking and technical expertise, we help ensure clients stay in and ahead of compliance and manage risk.



MANAGING LEGACY  
MAXIMIZING TODAY  
SHAPING TOMORROW

WSP and Parsons Brinckerhoff have combined and are now one of the world's leading engineering professional services consulting firms with 31,000 staff based in more than 500 offices, across 39 countries. Our Environment team helps organizations around the world manage risks and maximize opportunities related to environmental health and safety, sustainability, climate change, and energy. We help create competitive advantages for our clients by providing integrated solutions across many disciplines.

For further information contact:

T +1 703 709 6500  
[keith.green@wspgroup.com](mailto:keith.green@wspgroup.com)

[www.wspgroup.com/usa](http://www.wspgroup.com/usa)  
[www.pbworld.com/usa](http://www.pbworld.com/usa)



**Enablon**  
**Booth 41**  
**PLATINUM SPONSOR**  
233 S Wacker Dr  
Ste 5420  
Chicago, IL 60606  
www.enablon.net  
312-784-7955

Enablon is the world's leading provider of Sustainability, EH&S and Operational Risk Management Software. More than 1,000 global companies and 1 million users rely on Enablon software solutions to manage their environmental and social performance, minimize risks and improve profitability. Enablon offers the most comprehensive platform in the industry, and is consistently recognized as a global leader and visionary.

**Enhesa**  
**Booth 2**  
**GOLD SPONSOR**  
1411 K St, NW, Ste 1100  
Washington, DC 20005  
www.enhesa.com  
202-552-1090

Enhesa is an international environmental, health and safety consulting firm providing EHS and product regulatory assurance support to businesses worldwide. Over the past 21 years, Enhesa has developed a set of compliance assurance products and services specifically for multinationals. Headquartered in Brussels and Washington, D.C., their team of highly trained and experienced, multilingual consultants have the extensive expertise to keep companies ahead of the latest regulatory policy issues as they unfold in over 200 jurisdictions around the world. For more information, email [info@enhesa.com](mailto:info@enhesa.com).

**ERM**  
**Booth 45**  
**GOLD SPONSOR**  
1701 Golf Rd, Ste 1-700  
Rolling Meadows, IL 60008  
www.erm.com  
847-258-8900

Environmental Resources Management (ERM) is a leading global provider of environmental, health, safety, risk, social consulting services and sustainability related services. We have more than 150 offices in over 40 countries and territories employing more than 5,000 people. Over the past three years we have worked for more than 50 per cent of the Global Fortune 500 delivering innovative solutions for business and selected government clients helping them understand and manage the sustainability challenges that the world is increasingly facing.

**EtQ Inc.**  
**Booth 30**  
**GOLD SPONSOR**  
399 Conklin St  
Farmingdale, NY 11735  
www.etq.com  
516-293-0949

EtQ is the leading EHS Management Software System for identifying, mitigating, and preventing high-risk incidents through integration, automation, and collaboration. EtQ's EHS Management Software system helps maintain compliance with regulatory initiatives, such as ISO 14001 and OHSAS 18001. Key modules include Incidents, Crisis Management, Job Safety Analysis and more.

SiteHawk.com

## Chemical Data Management

SDS Management

SDS Authoring

Chemical Inventory Services

*2015 EHS Management Forum Gold Sponsor*  
**Visit Us at Booth #3**

**SiteHawk** 



# Sponsor Listing

## Gensuite LLC

**Booth 28**  
**GOLD SPONSOR**  
4680 Parkway Dr  
Ste 400  
Mason, OH 45040  
www.gensuite.com  
513-713-1086

Gensuite is the cloud-based solutions suite for organizational functions to manage risk and achieve compliance. We offer functionally-integrated and intuitive applications available for rapid deployment & immediate ROI, with a focus on service excellence and continuous evolution. Gensuite drives EHS program excellence for over 90 customers offering over 60 Web applications that span the entire EHS spectrum, with additional capabilities for allied functions such as Quality, Controllership, Responsible Sourcing, Security/Crisis Management, and Product Compliance.

## Geosyntec Consultants Inc.

**Booth 15**  
900 Broken Sound Pkwy  
Boca Raton, FL 33487  
www.geosyntec.com  
561-995-0900

With over 1000 professionals in 70+ offices worldwide, Geosyntec takes EH&S Management to a higher level to assist our clients in making sound business decisions by minimizing financial risk and maximizing environmental assets. For over a quarter century, our business has grown around projects involving proactive EH&S compliance; environmental studies and remediation; natural resources assessment and restoration; monetizing energy efficiency savings; and engineering, design, and construction for industrial, commercial, power, and other public and private sector clients.

## Golder Associates

**Booth 59**  
**GOLD SPONSOR**  
44 Union Boulevard  
Ste 300  
Lakewood, CO 80228  
www.golder.com  
303-980-0540

Established in 1960, Golder is a global, employee-owned organization driven by our purpose to engineer earth's development while preserving earth's integrity. From over 180 offices worldwide, our more than 8,000 employees help our clients find sustainable solutions to the challenges society faces today including extraction of finite resources, energy and water supply and management, waste management, urbanization, and climate change. We do this by providing a wide range of independent consulting, design and construction services.

## Haley & Aldrich Inc.

**Booth 51**  
**GOLD SPONSOR**  
3 Bedford Farms Dr  
Bedford, NH 03110  
www.haleyaldrich.com  
603-625-5353

Haley & Aldrich, Inc., is committed to delivering the value our clients need from their capital, operations, and environmental projects. Our one-team approach allows us to draw from our 600 engineers, scientists, and constructors in nearly 30 offices for creative collaboration and expert perspectives. Since our founding in 1957, we have one goal in all we do: deliver long-term value efficiently, no matter how straightforward or complex the challenge.

Water quality degradation, increasing stringent discharge regulations, and water scarcity all affect operational efficiency.

Our Intelligent Water Management helps you deal with these items while providing cost savings.

- CORPORATE WATER MANAGEMENT STRATEGY
- WATER SECURITY AND RISK MITIGATION
- WATER OPTIMIZATION EVALUATIONS
- WATER REUSE, RECYCLING, AND TREATMENT

## SMART.Solutions



**MWH**

BUILDING A BETTER WORLD

mwglobal.com



**Heritage Environmental Services LLC**

**Booth 14**  
7901 West Morris St  
Indianapolis, IN 46231  
www.heritage-enviro.com  
317-243-0811

Heritage and its subsidiaries turn big challenges into even bigger opportunities -- all while protecting human health and the environment. On a daily basis, we manage all sorts of wastes and by-products. We like recycling basic commodities, but also handle the toughest hazardous wastes. Our key facilities are some of the most robust in the US – including waste treatment, incineration and landfill. But in everything we do, we insist on doing things safely and compliantly.

**Huco Consulting Inc.**

**Booth 31**  
419 East 23rd St  
Houston, TX 77008  
www.hucoinc.com  
844-438-4826

Huco delivers compliance solutions to manage EHS, risk and operational sustainability. We help clients select a solution, design it for their needs, set it up with quality content, and provide them long term support to maintain it. We have been very successful helping a wide variety clients across the U.S. (O&G, energy, chemical, utilities, metals & pulp/paper). Providing high quality cost effective solutions with responsive and knowledgeable staff is what we do well.

**Humantech Inc.**

**Booth 21**  
1161 Oak Valley Dr  
Ann Arbor, MI 48118  
www.humantech.com  
734-663-6707

For over 35 years, global companies have relied on Humantech for workplace improvements. By combining the science of ergonomics and our unique 30-Inch View®—where people, work, and environment intersect—we deliver practical solutions that impact safety, quality, and productivity. At Humantech, we know people make productivity happen. For more information, visit [www.humantech.com](http://www.humantech.com).

**IHS Global Inc.**

**Booth 11**  
**GOLD SPONSOR**  
15 Inverness Way  
Englewood, CO 80112  
www.ihs.com  
514-337-2169

IHS equips companies around the globe to effectively manage environmental, health and safety performance. We accomplish this with proven software, robust content and recognized implementation expertise. Join a community of industry leading companies who leverage IHS solutions and accelerate your next round of improvements. Visit us to better understand how your peers are achieving results leveraging solutions for Process Safety, Environmental Performance, Management of Change, Product Compliance, Chemical Management, EHS Compliance and Quality Risk Management.

**CHWMEG's members  
strive to minimize the  
environmental footprint of the  
world's favorite products and services.**



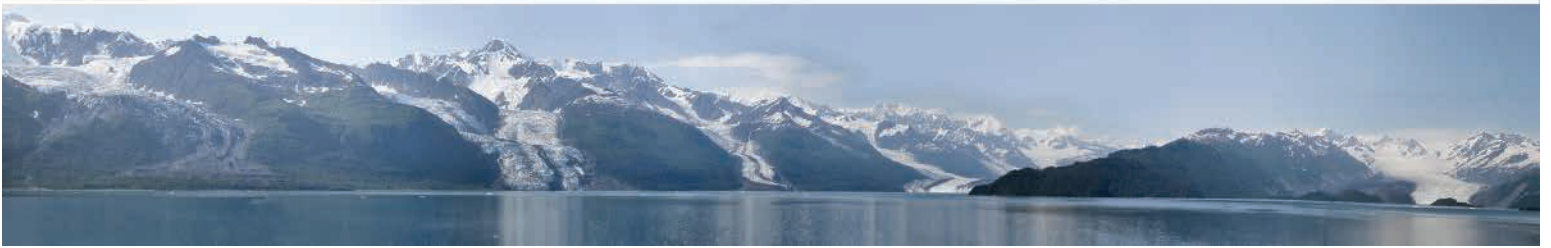
**World-wide HQ: Pittsburgh**  
**Asia-Pacific Office: Singapore**  
**Europe/Africa/Middle-East Office: Warsaw**







Sustainability is our way. Manage your environmental data using Locus EIM.



Visit us at  
**Booth 50**  
Register to win a  
**\$50 Amazon gift card**  
*See booth for details*



## Your One Stop Sustainability Partner

Veolia Provides Water, Waste & Energy Solutions

Uniquely positioned to address your needs

- **Water and wastewater technologies** and services including design-build-own-operate
- **Hazardous waste services**, treatment and recycling coupled with hands free industrial cleaning
- **Energy solutions** to optimize performance and reduce consumption, and services to provide utilities to industrial facilities including CHP

**Veolia North America**  
4760 World Houston Pkwy  
Houston, TX 77032  
Nationwide 888-262-4910  
[veolianorthamerica.com](http://veolianorthamerica.com)

*Proud Gold Sponsor*  
of NAEM's 23rd Annual EHS Management Forum

Resourcing the world



# Sponsor Listing

## Intelex Technologies

**Booth 18**  
**GOLD SPONSOR**  
905 King St  
West Toronto, ON  
Canada M6K69  
www.intelex.com  
416-599-6009 x263

With more than 1,000 clients and one million users, Intelex Technologies Inc. is a global leader in Environmental, Health, Safety (EHS) and Quality management software. Since 1992 its scalable, web-based platform and applications have helped clients across all industries improve business performance, mitigate organization-wide risk, and ensure sustained compliance with internationally accepted standards (e.g. ISO 9001, ISO 14001 and OHSAS 18001) and regulatory requirements.

## KMI

**Booth 26**  
**PLATINUM SPONSOR**  
586 Argus Rd STE 103  
Oakville, ON Canada L6J3J3  
www.kminnovations.com  
416-410-4817 Ext. 2149

MSDSonline and KMI have created *velocityEHS* — a new kind of software company — one that is focused on helping you reach your EHS and sustainability goals faster. We deliver the most relevant cloud EHS capabilities through a single solution that is more cost-effective, quicker and easier to implement, and provides the simplest user experience. That's why more than 8 million users trust our solution to create a safer, more sustainable environment. Learn more at booth #26 or by visiting [www.velocityEHS.com](http://www.velocityEHS.com).

## Locus Technologies

**Booth 52**  
**GOLD SPONSOR**  
299 Fairchild Dr  
Mountain View, CA 94043  
www.locustec.com  
650-960-1640

Locus Technologies is an environmental compliance and sustainability software company that provides configurable cloud-based solutions to organize, validate, analyze, visualize, and report data in a single SaaS-based system. Locus' software manages emissions to water, air, and soil, impact of greenhouse gases, remediation and environmental content. Since 1997, Locus has been serving commercial and government organizations including Chevron, Honeywell, Monsanto, DuPont, and Los Alamos National Laboratory. For more information, visit [www.locustec.com](http://www.locustec.com) or email [info@locustec.com](mailto:info@locustec.com).

## Medgate Inc

**Booth 12**  
**GOLD SPONSOR**  
95 St Clair Ave W. Ste 1008  
Toronto, ON  
Canada M6K 1N6  
www.medgate.com  
416-863-6800

Medgate's Environmental Health and Safety software is developed by EHS professionals with real world experience. Deployed as an integrated, enterprise-wide solution, the Medgate platform empowers organizations to centralize, streamline and standardize occupational health and safety data management across their organizations. Medgate offers 5 Software Suites that can be used individually or integrated for enterprise EHS data tracking and business intelligence. Visit [www.medgate.com](http://www.medgate.com) to find out more.



**wdesk**



Rethink your EHS process.

Stop by the Wdesk booth to learn how Wdesk can help.



Visit **[workiva.com/ehs](http://workiva.com/ehs)**  
to learn more.

[info@workiva.com](mailto:info@workiva.com) | +1.888.275.3125

**workiva**





# NAVIGATE EHS AND ENSURE COMPLIANCE

WITH OUR FLEXIBLE EHS AND SUSTAINABILITY SOFTWARE.

[www.cr360.com](http://www.cr360.com)  
or email [info@cr360.com](mailto:info@cr360.com) for more information



## INTELEX

### Save time and make data driven decisions with EHS software

We help you meet the challenges of a complex marketplace, streamline your operations and ensure the sustainability of your businesses.

**SIMPLIFY REPORTING FOR:**  
GRI | CDP | GHG Protocol

**STREAMLINE STANDARDS CERTIFICATION FOR:**  
ISO 14001 | OHSAS 18001 | ISO 45001

**VISIT US AT BOOTH #18**  
To learn what we can do for you!

1 877 932 3747 | [intelix.com](http://intelix.com)

# Sponsor Listing

## MWH Global

Booth 4

**GOLD SPONSOR**

370 Interlocken Blvd, Ste 300  
Broomfield, CO 80021  
www.mwhglobal.com  
303-410-5000

MWH Global is dedicated to Building a Better World. As specialists in water and natural resources, MWH employees use innovative ideas and technology to help solve complex infrastructure and environmental challenges. MWH employs approximately 7,000 experts including engineers, consultants and construction professionals in 35 countries; serving global communities through sustainable development and project delivery. MWH is a private, employee-owned company headquartered in Broomfield, Colorado. Visit [mwhglobal.com](http://mwhglobal.com) or connect via Twitter, Facebook and LinkedIn.

## Northstar Recycling

Booth 49

**PLATINUM SPONSOR**

94 Maple St  
East Longmeadow, MA 01028  
www.northstarrecycling.com  
413-241-5523

Northstar Recycling is a national recycling company that operates on the belief that sending reusable resources to a landfill is not only bad for the environment, it is bad for business. Serving businesses across North America, Northstar Recycling specializes in providing comprehensive waste management services that utilize Zero Waste to Landfill alternatives and innovative recycling solutions. Please visit us at Booth #49 to learn how we can help your business recycle more and landfill less.

## Perillon Software Inc.

Booth 25

**GOLD SPONSOR**

40 Nagog Park  
Acton, MA 01720  
www.perillon.com  
978-263-0412

Founded in 2001, Perillon Software Inc. provides comprehensive EHS Performance Management software, efficiently connecting hundreds of employees across all levels of a global enterprise. Our flexible and simplified solutions, now with the convenience of mobility, enable organizational transparency, increased awareness, and proactive prevention of unwanted events. Perillon's quick, systemized implementation and flexible data visualization increase productivity, save time, and reduce risk, setting a new standard for how managers meet EHS responsibilities. To learn more about Perillon, please visit [www.perillon.com](http://www.perillon.com) or follow us on Twitter @PerillonSoft.

## ProcessMAP Corp.

Booth 1

**PLATINUM SPONSOR**

1301 International Pkwy, #160  
Sunrise, FL 33323  
www.processmap.com  
954-993-7613

ProcessMAP Corporation is the leading provider of cloud-based enterprise software solutions that empower organizations to manage risk in three key areas: Environment, Health and Safety (EHS); Sustainability; and Compliance.

Advantages of ProcessMAP's platform include:

- Highly configurable to fit unique business needs
- True multi-tenant platform, enabling upgrades at no cost
- Built-in business analytics tools, providing real-time visibility to key metrics
- Extensive integration capabilities with internal and external systems (TPA, RIMIS, HR, etc.)
- Available in 25 languages



## Safety Training For Your Business

Every injury you can prevent is money in your pocket, so adding a Safety Management system to your business procedures just makes sense. UL Workplace Health & Safety offers PureSafety, a simple yet powerful solution to manage your safety training.

**For more information on PureSafety visit [ulworkplace.com/puresafety](http://ulworkplace.com/puresafety) or call 888.202.3016**





**EHS REGULATORY  
CONTENT**  
GLOBAL WATCH



**EHS COMPLIANCE  
MANAGEMENT**  
SOFTWARE



**EHS RISK  
ASSESSMENTS**  
CONSULTING

## GLOBAL EHS COMPLIANCE

Our commitment is to help our clients manage their risks in Environment, Health & Safety, by developing true partnerships around high value-added, industry-specific solutions.

232 Madison Avenue  
New York, NY 10016  
212 - 213 - 4356  
www.red-on-line.com

  
70+  
countries already covered

  
9 offices in  
4 continents

  
+5000 industrial  
facilities



# Dakota

S O F T W A R E

Move forward with certainty.™ | [dakotasoft.com](http://dakotasoft.com)

## Compliance-based EHS Management Solutions

-  Regulatory Content
-  Online Collaboration
-  Site-Specific Applicability
-  SmartForms
-  Compliance Calendars
-  Business Intelligence

Learn more at  
**Booth #46**





# Sponsor Listing

## Red-on-line

**Booth 24**  
**GOLD SPONSOR**  
232 Madison Ave  
New York, NY 10016  
www.red-on-line.com  
212-213-4356

Red-on-line solutions support industrial sites in their Environmental, Health & Safety compliance audit programs and their OHSAS 18001 & ISO 14001 & 50001 objectives. With global coverage in over 70 countries, our multilingual team of EHS experts can help you understand your EHS requirements, track and maintain compliance on user-friendly software, manage risk, and meet OHSAS/ISO objectives in diverse and changing regulatory environments. Red-on-line brings together EHS content, consulting, and software to provide clients with a high-quality EHS compliance solution. Our services are used by over 5,000 sites and more than 15,000 users worldwide.

## Redinger 360 Inc.

**Booth 27**  
**PLATINUM SPONSOR**  
P.O. Box 648  
Harvard, MA 01451  
www.redinger360.com  
978-772-8105

Redinger 360 provides EHS/Sustainability leaders and teams with risk management solutions that are designed to strengthen their company's resilience and ability to flourish. Based on our 360 Perspective Risk Management model, our solutions increase an organization's effectiveness in anticipating, seeing, and responding to emerging risks. Popular solutions include the 360 EHS/S Check-Up, the 360 Perspective Workshop, the R360 Risk Management System, and the 360 Annual Meeting. Visit redinger360.com for more details.

## Redshift Technologies Inc.

**Booth 19**  
35 East 29th St  
New York, NY 10016  
www.redshift-tech.com  
800-760-6737

Redshift provides customizable EH&S software, integration consulting, and environmental risk assessments. Examples include compound profiling, impact assessments, materials management, HazCom portals, SDS authoring and management, industrial hygiene, labeling systems, emissions tracking, inventory management, action tracking and auditing, expert systems, and corporate metrics reports and dashboards.

## RegAction

**Booth 17**  
10700 Richmond Ave #310  
Houston, TX 77042  
www.regaction.com  
713-623-5099

RegAction is the original provider of EMIS SaaS and Internet Enterprise Compliance Software. RegAction is a powerful online environmental information and safety management compliance system developed to provide environmental and safety professionals and managers with instant access to information and support tools vital to regulatory compliance, stewardship and reporting efforts.

 **medgate** Enterprise EHS Software Solutions

[www.medgate.com](http://www.medgate.com)

## Helping You Manage and Measure Health and Safety In the Workplace

Using our powerful Portal, companies have developed and strengthened a culture of health and safety in their organizations.



Occupational Health



Industrial Hygiene



Safety



Environment



Ergonomics



Portal

**Let's start the conversation.**  
Contact us today for more information.

### Medgate Inc.

Toll Free 1 800 276 9120 | Tel 416 863 6800  
[www.medgate.com](http://www.medgate.com)



# NEED ENVIRONMENTAL HEALTH AND SAFETY SOLUTIONS? JUST ASK GOLDER

Environmental Health and Safety (EHS) services are becoming increasingly important in today's work environment. With Worldwide offices in Africa, Asia, Australasia, Europe, North and South America, Golder brings the global EHS expertise and experience you need to solve your most complex problems. Golder by offering our services through local offices, we produce quality solutions that are on time, within budget, and customized to your needs. Discover how Golder's wide range of core services can help you. Visit our booth and meet our team.

**Engineering Earth's Development, Preserving Earth's Integrity.**

USA: Kevin Conroy (303) 980-0540  
Loren Anderson, Jr. (724) 935-6400  
CANADA: Berend Velderman (613) 592-9600  
www.golder.com



## Environmental Health & Safety Compliance

CEC audits corporate environmental health and safety programs; compliance with permit limits and state and federal regulations; and corporate policies and procedures.

### *Our Services & Expertise Include:*

- ▶ Compliance Auditing and Program Development
- ▶ Environmental Health and Safety Management Systems
- ▶ Pollution Prevention/Waste Management
- ▶ Spill Prevention Control and Countermeasure (SPCC) Plans
- ▶ Emergency Planning and Community Right to Know Act (EPCRA)
- ▶ Information Technology and Data Management
- ▶ Clean Air Act (CAA)
- ▶ Clean Water Act (CWA)
- ▶ Resource Conservation and Recovery Act (RCRA)
- ▶ Toxic Substances Control Act (TSCA)



Civil & Environmental Consultants, Inc.

www.cecinc.com | 800.365.2324



# Sponsor Listing

## RegScan Inc.

**Booth 53**  
800 West Fourth St  
Ste 202  
Williamsport, PA 17701  
www.regscan.com  
570-323-1010

One World, One Platform – Founded in 1987, RegScan, Inc. provides regulatory compliance services to companies worldwide. Unique online tools enable easy access to information for the U.S. and abroad. Access U.S. and international data on the same platform, and customize legal registers and audit protocols for more than 140 jurisdictions. Do your research and get your alerts through the RegScan One system, or have your content exported via web services to any online management system.

## Roux Associates Inc.

**Booth 32**  
209 Shafter St  
Islandia, NY 11749  
www.rouxinc.com  
800-322-ROUX

Roux Associates, Inc. is a professional services organization providing a broad range of consulting, engineering, and project management services to solve environmental issues associated with air, water, land and interior pollution; hazardous materials; and toxic waste treatment and disposal. We have been providing these services to an impressive list of Fortune 500 and public sector clients nationwide for 30 years through six offices, which are located in New York, New Jersey, Massachusetts, Illinois and California.

## SafeTec Compliance Systems

**Booth 34**  
7700 NE Parkway Dr  
Ste 125  
Vancouver, WA 98662  
www.safetec.net  
360-567-0280

SafeTec gives Environmental, Health & Safety professionals the support, technology and know-how to make informed decisions about the chemicals in their organization. We unlock the data within safety data sheets and use automation to deliver the structured information EH&S professionals need to manage thousands of chemicals safely and sustainability. For more information, visit SafeTec.net.

## Schneider Electric

**Booth 9**  
**PLATINUM SPONSOR**  
10350 Ormsby Park Place  
Ste 400  
Louisville, KY 40223  
www.schneider-electric.com  
502-614-2404

Schneider Electric's Energy & Sustainability Services division helps clients adopt, adjust and advance a tailored energy and resource management strategy. We connect each element in our clients' energy and sustainability portfolios into a single, fully integrated approach. Our professionals around the globe deliver services, solutions and software to equip our clients to meet their evolving energy and sustainability challenges now and in the future. Learn more at: www.schneider-electric.com.

## Managing Risk

in an increasingly complex regulatory environment is a daily challenge for EHS professionals in all industries. You need a partner that is as invested in your goals as you are. We have the knowledge and experience to simplify the most difficult compliance challenges.

**Woodard & Curran:** supporting effective EHS programs with custom compliance management software, program development, training, audits, and outsourced program management.



**COMMITMENT & INTEGRITY DRIVE RESULTS**

[woodardcurran.com](http://woodardcurran.com)

EHS  
Process Design

Operations/Incident  
Management

Continuous  
Improvement

Sustainability &  
Regulatory  
Reporting

## Risk Management in Environmental Health & Safety

### The 5 Minute Webinar On... 4 Ways to Teach Your EHS to Speak Risk

Risk is fast becoming the strongest and most comprehensive way to benchmark compliance, make more informed decisions, and enhance visibility into areas of improvement within the organization.

In just 5 minutes, you'll learn how you can apply 4 common risk methods to your Environmental Health and Safety Management System



Watch this free webinar at  
[www.etq.com/naem](http://www.etq.com/naem)



**TRADEBE™**

*Sustainability at Work*



*For more information,*

**CALL: (800) 388-7242**

email: [us.salesinfo@tradebe.com](mailto:us.salesinfo@tradebe.com)

TRADEBE is a global leader in **sustainable waste management** using patented, innovative technology to recycle hazardous chemicals.



Visit our website to Watch SDS now! [www.tradebeusa.com](http://www.tradebeusa.com)

**We recycle over 60% of the waste we process through the use of green technology.** Our patented SDS technology offers an effective method for **recycling hazardous waste to recover a viable product as an alternative to waste disposal.**



# Sponsor Listing

**Sitehawk**  
**Booth 3**  
**GOLD SPONSOR**  
709 Nissan Dr  
Smyrna, TN 37167  
www.sitehawk.com  
615-459-0064

SiteHawk is a leading innovator in chemical data management and compliance solutions offering a complete approach to SDS management, chemical inventory tracking, and product sustainability initiatives. Organizations in virtually every industry worldwide utilize SiteHawk solutions to manage their hazard communication programs, meet EHS compliance initiatives, manage chemical inventories and chemical data, publish safety data sheets, and keep workers safe throughout the organization. Visit us online at [www.sitehawk.com](http://www.sitehawk.com).

**Stericycle Environmental Solutions Inc.**  
**Booth 13**  
**GOLD SPONSOR**  
5151 San Felipe  
Houston, TX 77056  
www.StericycleEnvironmental.com  
847-367-9493

Stericycle acquired PSC Environmental Services, LLC, a leading provider of environmental and regulated waste management solutions, to form Stericycle Environmental Solutions. This combination of two recognized industry leaders provides a strengthened infrastructure and a broader portfolio of services for customers who generate regulated waste in the retail and healthcare industries, among others. Customers receive innovative and sustainable solutions that safeguard the environment, protect people and keep their organizations compliant.

**Tradebe Environmental Services**  
**Booth 37**  
**GOLD SPONSOR**  
4343 Kennedy Ave  
East Chicago, IL 46312  
www.tradebe.com  
800-388-6411

TRADEBE is a global leader in sustainable waste management using patented, innovative technology to recycle hazardous chemicals. We recycle over 60% of the waste we process through the use of "green" technology. SDS, for example, is the only technology of its kind in the US offering generators an effective and cost-efficient method for recycling organic solid waste to recover a viable product as an alternative to waste disposal. For more information on how TRADEBE can assist you with your goals of sustainable waste recycling, please call us at (800) 388-7242 or email us at [us.cs@tradebe.com](mailto:us.cs@tradebe.com).

**TRC Environmental Corp.**  
**Booth 5**  
650 Suffolk St, Ste 200  
Lowell, MA 01854  
www.trcsolutions.com  
978-970-5600

As Environmental Health and Safety experts and skilled advisors in sustainability, TRC provides integrated systems solutions to manage risk, leverage opportunities, and create business value in a changing world. Our approach integrates environmental, social, and financial considerations to help our clients make smarter business decisions. Services include sustainability strategy and reporting, eco-efficiency assessments, compliance audits/assurance programs, management systems, information systems, health and safety/industrial hygiene programs, and strategic due diligence.

## COMPLIANCE IS OUR BUSINESS.

Enhesa is the market leader in global environmental, health and safety compliance assurance providing support to businesses worldwide.



[www.enhesa.com](http://www.enhesa.com)

### THE ENHESA ADVANTAGE

**OVER 75**  
EHS REGULATORY  
ANALYSTS  
REPRESENTING  
**40+**  
NATIONALITIES  
COVERING  
MORE THAN  
**200**  
JURISDICTIONS  
WORLDWIDE

# Sponsor Listing

## Trinity Consultants

**Booth 22**  
12770 Merit Dr, Ste 900  
Dallas, TX 75251  
www.trinityconsultants.com  
800-229-6655

Trinity Consultants advises on environmental regulations and environmental management, specializing in air permitting and compliance management. Trinity also provides BREEZE® modeling software, assists with EH&S information management solutions, and provides EH&S professional training and staffing assistance. SafeBridge Consultants, a Trinity Consultants company, provides SH&E services to the life sciences industries.

## UL Workplace Health & Safety

**Booth 36**  
**GOLD SPONSOR**  
500 Meridian Blvd, Ste 600  
Franklin, TN 37067  
www.ulworkplace.com  
888-202-3016

UL Workplace Health & Safety is part of the UL family, a trusted name for more than a century. We specialize in providing software products to support Online Safety Training, Safety Management and Occupational Health. UL's PureSafety Safety Management System employs integrated tools to simplify and centralize training, safety and compliance programs. With a single, comprehensive system, you can seamlessly manage recurring training requirements, report incidents and observations, and provide powerful reporting and analytics.

## US Ecology

**Booth 60**  
17440 College Pkwy, Ste 300  
Livonia, MI 48152  
www.usecology.com  
800-592-5489

US Ecology is a leading North American provider of environmental services to commercial and government entities with over 62 years of experience. We specialize in radioactive, hazardous, non-hazardous waste treatment and disposal; industrial cleaning and maintenance; remediation; chemical recycling, and waste water treatment. US Ecology's focus on safety, environmental compliance, and customer service, enables us to effectively meet the needs of our customers and to build long-lasting relationships. Visit [www.usecology.com](http://www.usecology.com).

## Veolia North America

**Booth 50**  
**GOLD SPONSOR**  
700 E. Butterfield Rd, Ste 201  
Lombard, IL 60145  
www.veolianorthamerica.com  
630-218-1500

Veolia Industrial Business North America provides a complete range of services for customers with hazardous waste and industrial service needs. Our 5,800 employees safely provide world-class value and service from 120 offices in the US, Canada and Puerto Rico, including 12 OSHA VPP or ISO certified sites. VES provides industrial cleaning, mechanical and maintenance services, incineration, recycling of solvents, lighting and electronics recycling, fuels blending and services on customer's sites such as lab packing.

# 6X in 4 Years!

Cloud-based EHS, Sustainability & Risk Management solutions supporting 16,000+ sites globally!

VISIT BOOTH 28

## WHICH EHS, SUSTAINABILITY & RISK MANAGEMENT SOFTWARE SOLUTION PROVIDER HAS...

- Grown 6X in subscribing companies since 2011?
- Delivered 100% on-time go-live targets; as quick as 4 weeks?
- Achieved 91%+ subscriber retention over the last 4 years?



# Gensuite

COMPLIANCE & RISK MANAGEMENT SOLUTIONS



FAST TO DEPLOY



PROVEN



MOBILE



MULTI-LINGUAL



SCALABLE



AFFORDABLE



SERVICE EXCELLENCE

**Woodard & Curran**

**Booth 56**

**GOLD SPONSOR**

40 Shattuck Rd, Ste 110  
Andover, MA 01810  
www.woodardandcurran.com  
978-557-8150

Woodard & Curran is an integrated environmental management, engineering, science, and operations company serving public and private clients nationwide. We help our clients address complex environmental challenges. For over thirty years, we have earned trust by committing to our clients' success, managing risk, and delivering results. We provide a wide range of services to address environmental, infrastructure, water resources, and energy needs. Learn more at [www.woodardcurran.com](http://www.woodardcurran.com).

**Workiva**

**GOLD SPONSOR**

**Booth 23**

2900 University Blvd  
Ames, IA 50010  
www.workiva.com  
641-485-7144

Workiva (NYSE:WK) created Wdesk, a cloud-based productivity platform for enterprises to collect, link, report, and analyze EHS data with control and accountability. Thousands of organizations, including over 65 percent of the Fortune 500, use Wdesk for risk, compliance, or sustainability reporting. Wdesk helps mitigate enterprise risk, improve productivity, and give users confidence to make decisions with real-time data. See what we can do for you at [workiva.com](http://workiva.com).

**WSP**

**GOLD SPONSOR**

**Booth 39**

11900 Sunrise Valley Dr  
Ste 300  
Reston, VA 20191  
www.wspgroup.com/usa  
703-709-6500

WSP and Parsons Brinckerhoff have combined and are now one of the world's leading engineering professional services consulting firms. We bring together approximately 32,000 staff based in more than 500 offices, across 39 countries. Our Environment team helps organizations around the world manage risks and maximize opportunities related to sustainability, climate change, environment, energy, and health and safety. We help create competitive advantages for our clients by providing integrated solutions across many disciplines.

**xOverTime**

**Booth 16**

PO Box 1695  
Bethel Island, CA 94511  
www.xovertime.com  
415-968-9684

xOverTime, Inc. improves overall workflow and use of spreadsheets with automated cloud database technology. The majority of environmental data management and reporting is done in Microsoft Excel™ where xOverTime improves data collection, data governance, analysis and reporting. Our xEmissions solution is transparent, easy to implement, and nonproprietary. In short, "you own your calculations". NAEM members would find interest in our energy management, corporate metrics, financials and cap and trade programs for GHG, SO2 and NOx.



*The Power of Portable Knowledge*



[www.perillon.com](http://www.perillon.com)



@PerillonSoft



#GOpakMobile



# NAEM Affiliates Council Members

NAEM's Affiliates Council is a peer-vetted group of leading service providers and consulting firms. These members serve as strategic partners to NAEM's membership of "in-house" EHS and sustainability managers. To learn more about the Affiliates Council, contact NAEM at [membership@naem.org](mailto:membership@naem.org).

## 3E Co.

Actio Corporation

AECOM

AlterEcho

AMEC

Antea Group

ARCADIS

Assent Compliance

Beveridge & Diamond

Bloomberg BNA

Bureau Veritas

CB&I

CDM Smith

CH2M Hill

Civil & Environmental Consultants Inc.

GHD (Conestoga-Rovers & Associates)

CRedit360

DAI Environmental

Dakota Software Corp.

## E2 ManageTech

EHS Support

Enablon

Enhesa

Ramboll Environ

ENVIROSYS

ERM

Gannett Fleming

Gensuite LLC

Geosyntec Consultants Inc.

Golder Associates

Haley & Aldrich Inc.

Heritage Environmental Services LLC

HRP Associates

Humantech Inc.

IHS Global Inc.

Intelix Technologies

Kestrel Management Services

KMI

## Labelmaster

Locus Technologies

McCoy and Associates

MetaVu

Miles & Stockbridge

MWH Global

Northstar Recycling

O'Brien & Gere

Pinnacle Engineering

ProcessMap Corp.

Redinger 360 Inc.

RegAction

Schneider Electric

Solution Foundry

Specialty Technical Consultants

TRC Companies Inc.

Trinity Consultants/T3

Veolia North America

WSP Environmental & Energy



changing  
tomorrow  
with today's  
choices



SUSTAINABILITY SOLUTIONS



TRANSPORTATION  
& DISPOSAL



CUSTOMIZED BY-PRODUCT  
SOLUTIONS



MAILBACK/TAKEBACK  
SERVICES



CONTINUOUS  
IMPROVEMENT



BRAND PROTECTION

Stop by booth 13 for a chance to win a Kindle!

[StericycleEnvironmental.com](http://StericycleEnvironmental.com)

# NAEM Corporate Members

NAEM's programs are made possible with the support of its corporate member organizations. These companies are committed to advancing EHS and sustainability management excellence, and sharing best practices through NAEM's network. For more information about corporate membership in NAEM, please contact [membership@naem.org](mailto:membership@naem.org).

**3M**  
Abbott Laboratories  
AEP  
Ashland  
Baxter  
BBA Aviation  
Best Buy  
Biogen Idec  
BNSF Railroad  
Boston Beer Co.  
Boeing  
Brother  
CF Industries  
CP Kelco  
Cardinal Health  
Carnival  
Caterpillar  
Cisco  
Coca-Cola  
Corning  
CVS Caremark  
Dean Foods  
Deere & Company

Duke Energy  
DuPont  
EMD Millipore  
Emerson Electric  
Enerplus  
The Estee Lauder Companies  
Exelis  
Fiat Chrysler  
FUJIFILM  
Gates  
Genentech  
General Electric  
General Mills  
Genzyme  
Globalfoundries  
HP  
Honeywell  
IBM  
Ingersoll Rand  
Intel  
International Paper  
ITT  
JM Huber

Juniper Networks  
Koch Industries  
Kraft Foods  
Lockheed Martin  
Mallinckrodt  
Mars  
Mattel  
MeadWestVaco  
NBCUniversal  
NCASI  
NRG Energy  
NY Power Authority  
Novartis  
Pacific Gas & Electric  
Parker Hannifin  
Pepco Holdings  
Pfizer  
Pitney Bowes  
PPL Services Corp  
Procter & Gamble  
Quaker Chemical  
Raytheon  
Rockwell Automation

**SABIC**  
Santee Cooper  
SCANA Energy  
Schneider-Electric  
Southern Company  
Suncor  
Stanford University  
Target  
The Mosaic Co.  
The Wm. Wrigley Jr.  
US Foodservice  
US Postal Service  
United Technologies  
Universal Rail  
Vanderbilt University  
Air Liquide Advanced  
Materials  
Westinghouse  
WhiteWave Foods  
Whirlpool  
Xylem



## Delivering Total Business Solutions

Take your Environmental,  
Health and Safety Management  
game to the big leagues!

[www.arcadis.com](http://www.arcadis.com)



# Thank You 2015 Forum Planning Committee

The EHS Management Forum is made possible through the time, energy and expertise of the Forum planning committee.

**Virginia Hoekenga**

Deputy Director  
NAEM

**Megan Lum (Forum Committee Chair)**

Director, Environment, Generation  
The Pacific Gas and Electric Co.

**Asif Ansari**

Manager, Environmental Compliance/  
Risk Management  
United States Postal Service

**Fawn Bergen**

Senior Environmental Engineer  
Intel Corp.

**Deborah Briggs**

Corporate Director, EHS  
Cargill Inc.

**Kevin Conroy**

Principal and U.S. Manufacturing Sector Lead  
Golder Associates Inc.

**Kristen Dickey**

General Manager  
WSP Group

**Chris England**

Director EHS and Security  
Xylem Inc.

**Sulaiman Hamidi**

Director, Sustainability & Product Stewardship  
Allergan Inc.

**Donavan Hornsby**

Vice President  
Gensuite LLC

**Marian Hwang**

Principal  
Miles & Stockbridge PC

**Michael Lloyd**

Director, Environmental Health,  
Safety & Sustainability  
Huber Engineered Woods

**Richard Love**

Manager, Environmental Sustainability  
United Technologies Corp.

**Robert Lucacher**

Director of EH&S and Practice Leader  
Cushman & Wakefield Inc.

**Jim McCabe**

Business Sustainability Manager  
Waters Corp.

**Sarah Medearis**

Partner  
Environmental Resources Management

**Curtis Michols**

Senior Principal Specialist, Global  
Environment, Health and Safety  
Abbott Laboratories

**Michael Morgan**

Group Environmental Director  
BBA Aviation

**Jenna Newcombe**

Senior Engineer  
Geosyntec Consultants

**Kenny Ogilvie**

Chairman and CEO  
EHS Support Inc.

**Michelle Redfield**

Director, Environment and Process  
Improvement  
Schneider Electric

**Charles Redinger**

President  
Redinger 360 Inc.

**Annette Russo**

Manager, Communications, Training,  
Worldwide EHS  
Johnson & Johnson

**Juan-Carlos Tabora**

Environmental and Sustainability Manager  
Ryder Inc.

**Brad Waldron**

Director, Corporate Risk Management  
Caesars Entertainment Corp.

**Bryce Wendland**

Safety & Environmental Systems and  
Project Manager  
Schneider Electric

**David Williams**

Director, Environment and Sustainability  
Teva Pharmaceutical Industries Ltd.



Join us next year for the  
**2016 EHS Management Forum**  
October 25-28 | Denver, CO

