



EHS & Sustainability Management

FORUM19

OCTOBER 15-18 | TORONTO, ONTARIO



Welcome to the Forum

Dear Colleagues:

Welcome to the 27th annual NAEM EHS&S Forum!

On behalf of the Forum Planning Committee I invite you to do a few things to make this an amazing investment for you, your colleagues and for all EHS&S Leaders of Tomorrow:

- **Be present:** In our daily lives, we often juggle multiple priorities as we rush to get through the day. The Forum offers so much highly relevant content that I hope each of us can create the space to be fully present while we are here together. The next two days will only happen once.
- **Be engaged:** One of the hallmarks of NAEM is the meaningful conversations. The Forum, and the EHS&S community we belong to, stems from our willingness to share experiences – of what works, what doesn't work, what is most pressing today, how to lead and what issues are emerging for tomorrow. Take in these experiences. Share your own stories.
- **Be Mindful:** The Forum is a chance for you to hear a variety of perspectives and to learn how others have grown and delivered value to their organizations. I hope we can all open our minds to new approaches, and new growth opportunities– we never know where the next great idea or motivation will come from.

Connect with old friends and make new ones. Take every opportunity to learn and apply what you've learned from your EHS&S peers. Let's all make this a fantastic start to a new era of EHS&S Leaders!

Sincerely,



Paul Robbertz

**Senior Director, Environmental Health and Safety; Danone North America
and 2019 Forum Program Committee Chair**

What you'll find inside

Schedule at a Glance	4
Forum Sponsors	8
Exhibit Hall Map	11



About NAEM

The National Association for Environmental, Health and Safety, and Sustainability (EHS&S) Management (NAEM) empowers corporate leaders to advance environmental stewardship, create safe and healthy workplaces and promote global sustainability. As the leading business community for EHS&S decision-makers, we provide engaging forums, a curated network, peer benchmarking, research insights and tools for solving today's corporate EHS&S management challenges. Visit us online at naem.org.

Networking Highlights

Tuesday, October 15

Day of Service [Ashbridges Bay](#)

9:30 a.m. - 2:00 p.m. (Transportation leaves at 9:30 a.m.)

Cost: \$20 per person (includes lunch)

Sponsored by:



Annual Golf Event [BraeBen Golf Course](#)

12:00 - 5:00 p.m.

Cost: \$60 per person (includes lunch)

Sponsored by:



Wednesday, October 16

Opening Reception [Exhibit Hall](#)

5:30 - 7:00 p.m.

Sponsored by:



Thursday, October 17

Dinner and Networking Event [Hockey Hall of Fame](#)

6:30 - 10:00 p.m.

Enjoy a great night of food, drinks, entertainment and interactive games at the historic Hockey Hall of Fame! **Cost: \$95.** Buy your ticket at the registration desk.

Sponsored by:



Friday, October 18

Women's Leadership Networking Breakfast [Pier 4](#)

8:30 - 10:00 a.m.

Join your EHS&S peers for a networking breakfast and presentation on Women's Leadership. **Cost: \$50.**

Professional Headshots [Pier 2/3 Foyer](#)

8:30 - 11:30 a.m.

If you are looking for a new position, recently changed your look or are still using the same photo from 20 years ago, it's time to get a new headshot! NAEM will have a professional photographer onsite to capture your new professional image. The best part... it's complimentary! Opportunities are limited. Please see the registration desk to sign up.

Toronto Old Town Walking & Food Tour

10:00 a.m. - 12:00 p.m.

Discover Toronto's roots on this two-hour walking tour that traces the city's journey into the multicultural metropolis it is today. Departing from the Westin Harbour Castle hotel attendees will walk past the bustling Union Station and financial district, iconic landmarks of Old Toronto and head to the St. Lawrence Food Market. **Cost: \$30.**

Go Paperless @ The Forum

Download the Forum app to plan your conference, share your feedback and stay connected.

It's easy to get and use the app!

- 1 Visit your app store and search for: **NAEM Events**
- 2 After downloading, search for the event: **ehs19**
- 3 Download the event, and login to create your own profile!

Need help?

Visit us at the registration desk for assistance.



Schedule at a Glance



Wednesday, October 16

7:00 a.m. - 5:15 p.m. Registration is Open [Metro Foyer](#)

7:00 - 8:00 a.m. Breakfast in the Exhibit Hall [Metro Centre/West](#)

8:00 - 8:30 a.m. Opening Remarks [Metro East](#)

8:30 - 9:45 a.m. Keynote: How Climbing Mount Everest Helped Me to Be a Better EHS Leader [Metro East](#)

9:45 - 10:30 a.m. Networking Break in the Exhibit Hall [Metro Centre/West](#)

	TRACK 1: Driving Business Value	TRACK 2: Risk & Resilience	TRACK 3: Skilled Leaders, Strong Culture	TRACK 4: Foundational EHS&S	TRACK 5: Planning for a Sustainable Future
10:30 a.m. - 12:00 p.m.	SESSION 1: Leveraging the Best Practices in Safety Strategy Harbour A	SESSION 2: How to Effectively Communicate EHS&S Risk to the C-Suite Harbour C	SESSION 3: Growing EHS Professionals Into Leaders Harbour B	SESSION 4: Re-visioning EHS Auditing to Add Value and Minimize Risk Pier 2/3	SESSION 5: Corporate Sustainability Goal Setting Pier 4/5

12:00 - 1:30 p.m. NAEM Excellence Awards Ceremony Luncheon [Metro East](#)

Sponsored by:



1:30 - 3:00 p.m.	SESSION 6: Finding Hidden Value in Your Environmental Liability Portfolio Harbour A	SESSION 7: Advance Your Climate Risk and Resiliency Planning Harbour C	SESSION 8: How to Create and Embrace a Diverse and Inclusive Workforce Harbour B	SESSION 9: Managing EHS in the Current State and Federal Regulatory Environment Pier 2/3	SESSION 10: Addressing the Emerging Sustainability Risk of Plastic Waste Pier 4/5
------------------	--	---	---	---	--

3:00 - 3:45 p.m. Networking Break in the Exhibit Hall [Metro Centre/West](#)

3:45 - 5:15 p.m.	SESSION 11: Harnessing Data for Better EHS Decision-Making Harbour A	SESSION 12: Addressing Emerging Health & Safety Risks Around Opioids, Cannabis and Mental Health Harbour C	SESSION 13: Increasing Your Leadership Effectiveness through Stronger Executive Presence Harbour B	SESSION 14: Tips and Strategies on Moving Towards Zero Waste Pier 2/3	SESSION 15: Protecting Your Privilege to Operate through Effective Community Engagement Pier 4/5
------------------	---	---	---	--	---

5:30 - 7:00 p.m. Opening Networking Reception in the Exhibit Hall [Metro Centre/West](#)

Sponsored by:



Track Descriptions

TRACK 1: Driving Business Value

Sessions in this track will help you quantify the business value your EHS&S programs are generating. You'll learn specific examples that can be modeled and adopted for your own efforts.

TRACK 2: Risk & Resilience

To make the business case to your executive leadership, you need to elevate the EHS&S risks that need the greatest attention as part of the enterprise risk discussion. This track will give you strategies to make your organization more resilient and less vulnerable to business interrupting risk.

TRACK 3: Skilled Leaders, Strong Culture

Skilled leaders and a strong EHS and sustainability culture are the underpinnings of world-class organizations. Don't miss the chance to delve into conversations about how to create strong cultures and attend sessions that will sharpen your own leadership skills.

Thursday, October 17

7:00 a.m. - 4:00 p.m.	Registration is Open Metro Foyer				
7:00 - 8:15 a.m.	Breakfast in the Exhibit Hall Metro Centre/West				
8:15 - 8:30 a.m.	Opening Remarks Metro East				
8:30 - 9:45 a.m.	Keynote: Championing Sustainability Into Organizations at Every Stage Metro East				
9:45 - 10:45 a.m.	Networking Break in the Exhibit Hall Metro Centre/West				
10:45 a.m. - 12:15 p.m.	TRACK 1: Driving Business Value	TRACK 2: Risk & Resilience	TRACK 3: Skilled Leaders, Strong Culture	TRACK 4: Foundational EHS&S	TRACK 5: Planning for a Sustainable Future
	SESSION 16: How EHS Leaders are Responding to Changing Consumer Demands Harbour A	SESSION 17: From Due Diligence to Post-Merger Integration: Managing EHS During M&A Harbour C	SESSION 18: Sharpening Your Leadership Influencing Skills Harbour B	SESSION 19: Trends and Innovation in EHS&S Training Pier 2/3	SESSION 20: Big Wins and Ambitious Targets in Energy Reduction and Renewables Pier 4/5
12:15 - 2:00 p.m.	Business-to-Business Lunch Metro East				
2:00 - 3:30 p.m.	SESSION 21: Show Me the Money: Communicating Your Successes in Reducing EHS Costs Harbour A	SESSION 22: Strategies for Managing Chemical Risk in Products and Supply Chains Harbour C	SESSION 23: Keeping the Focus on Safety Culture Harbour B	SESSION 24: Innovative Ways to Address EHS&S Organizational Design and Resource Needs Pier 2/3	SESSION 25: Circular Economy: Moving from Big Idea to Implementation Pier 4/5
3:30 - 3:45 p.m.	Networking Break Metro Foyer				
3:45 - 5:15 p.m.	Keynote: Global Citizenship — Change Your Mind, Change Your World Metro East				
5:15 - 5:30 p.m.	Closing Remarks Metro East				
6:30 - 10:00 p.m.	Dinner and Networking Hockey Hall of Fame Tickets will be available for purchase at the door. Sponsored by:				
					

Friday, October 18

8:30 - 9:45 a.m.	Grab and Go Pastries and Coffee Pier 2/3 Foyer
8:30 - 11:30 a.m.	Professional Headshots Pier 2/3 Foyer
8:30 - 10:00 a.m.	Women's Leadership Networking Breakfast Pier 4
9:00 - 10:30 a.m.	A Conversation with an EHS&S Headhunter Pier 7/8
9:00 - 10:30 a.m.	Maximizing Your Communication Style Pier 9
10:00 a.m. - 12:00 p.m.	Toronto Old Town Walking & Food Tour Offsite
12:00 p.m.	Conference Adjourns

TRACK 4: Foundational EHS&S

Sessions in this track will focus on evergreen EHS&S business management programs and challenges and how you can prepare yourself to meet those expectations. Join the discussion to learn new strategies and fresh perspectives on how you can build a program that will withstand the test of time.

TRACK 5: Planning for a Sustainable Future

Dramatic sustainability gains can only be achieved through innovative programs and thinking. Come explore the emerging issues and leading programs your peers are adopting to truly create a sustainable future for their businesses and the planet.

2019 Keynotes:

Inspiration to Drive Your Programs Forward

Wednesday, October 16 | 8:30 - 9:45 a.m. | [Metro East](#)

Sophia Danenberg, EHS Strategy, International Policy Analysis; The Boeing Co.



Sophia Danenberg

How Climbing Mount Everest Helped Me to Be a Better EHS Leader

As the first African American woman to successfully scale Mt. Everest, Sophia Danenberg's story is one of extraordinary discipline and determination. Not only did it test her endurance, but it also made her a better EHS leader. She will share her experiences with you and explain how she incorporated her lessons from the summit into her EHS strategy role.

Thursday, October 17 | 8:30 - 9:45 a.m. | [Metro East](#)

Deanna Bratter, Senior Director, Public Benefit & Sustainable Development; Danone North America

Jill Kolling, Vice President, Global Sustainability; Cargill Inc.

Rick Taylor, Corporate Vice President, EHS; Parker Hannifin Corp.

Moderator: Paul Robbertz, Senior Director, Environmental Health & Safety; Danone North America

Championing Sustainability Into Organizations at Every Stage

The time has come to see sustainability as the catalyst for business growth, resiliency and leadership. This lens will drive profitable growth, attract and retain the best employees, and ensure license to operate across markets and industries.

Be inspired by our keynote's quest toward deeper purpose and sustainability integration, internally and externally. They will discuss hurdles overcome, actions taken, and movement from values to impact. Attendees will come away with insights about incremental and transformational opportunities to leverage their efforts as EHS&S professionals in shifting their own organization's sustainability paradigm.



Deanna Bratter



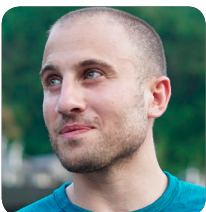
Jill Kolling



Rick Taylor

Thursday, October 17 | 4:00 - 5:15 p.m. | [Metro East](#)

Chris Bashinelli, National Geographic Explorer



Chris Bashinelli

Global Citizenship — Change Your Mind, Change Your World

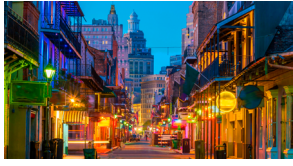
National Geographic Explorer Chris Bashinelli, using real-life visual examples from the slums of Haiti to the fields of Uganda to the Mongolian Steppe, will illustrate how the key to productivity, meaning and connection lies in transforming not our external conditions, but our internal ones.

Hear Chris explain how Global Citizenship, using our everyday work and lives as a vehicle to grow inwardly, helps us become the best version of ourselves. When we embody the qualities of a Global Citizen — presence, empathy and inspiration — then we can truly inspire those around us.

With the mindset of the Global Citizen, every challenge in our work and lives — from a disagreement with a coworker to the loss of someone we love — becomes fuel for us to grow inwardly and reach our potential. It begins with realizing we already have everything we need to be happy right now. You'll leave this session with a better understanding of the Global Citizen concept and how it can help you.



2020 Conferences - Save the Date



Software, Innovation & Technology Showcase **March 3 - March 5, 2020 | New Orleans, Louisiana**

Benchmark your EHS & Sustainability technology with other EHS&S leaders, and learn how you can most effectively update your systems for the new decade. You'll get to explore over 30 EHS&S software systems and discuss data management challenges with solution providers and peers in one place.



EHS Operational Excellence Conference **May 5 - May 7, 2020 | Columbus, Ohio**

Are you looking for new ideas to ensure that your company has strong EHS management systems in place? Join our annual showcase of the leading practices to reduce risk, embed compliance into business culture and reach new levels of EHS operational excellence.



Impact Sustainability Conference **August 3 - August 5, 2020 | Denver, Colorado**

Benchmark leading practices, discover new solutions, and learn innovative strategies that companies use to meet sustainability goals.



2020 EHS&S Management Forum **October 20 - October 23, 2020 | Fort Worth, Texas**

NAEM's EHS&S Management Forum is the largest annual gathering for EHS&S decision-makers. This is the premiere event dedicated to best practice-sharing for those developing and integrating strategic environmental, health and safety programs within companies.

WE ARE
*GLOBAL
CITIZENS*

We have a responsibility
to our employees, our consumers,
our communities, and our world.

**ESTÉE
LAUDER
COMPANIES**

Follow@esteelaudercompanies



NAEM's Conferences are a great place to host your team meetings. A special thank you to the companies hosting EHS&S team meetings at this year's Forum:

The Estée Lauder Companies

Amphenol

Cargill

CF Industries

Ask at the registration desk about holding one of your EHS&S team meetings in conjunction with an NAEM conference!

Thank You to Our Platinum Sponsors



Thank You to Our Gold Sponsors

AECOM



cority[™]

Dakota
SOFTWARE



ENVIANCE



Geosyntec
consultants



JACOBS[®]

MARCOM



M^cCOY

RAMBOLL



wood.

Thank You to Our Green Sponsors

EA Engineering, Science and Technology, Inc., PBC
EY LLP
Gannett Fleming, Inc.
HETI
HRP Associates, Inc.
Hodgson Russ LLP
KES Industrial
Lifeguard Solutions
Locus Technologies
Red-on-Line
Redshift Technologies, Inc.
RegScan, Inc.

Roux Associates
SHE Software
Specialty Technical Publishers
Stantec Consulting Services Inc.
Trinity Consultants
US Ecology
Veolia
Verisk 3E
Woodard & Curran
Workcare Inc.
WSP USA Inc.
xOverTime, Inc.

Thank You to Our Sponsors

Corporate Sponsor:

ESTÉE
LAUDER
COMPANIES

NexGen Leader Awards Sponsors:



JACOBS®



Networking Dinner Sponsors:



INTELEX

Annual Golf Event Sponsor:



Opening Reception Sponsor:



Day of Service Sponsor:



Skywalk Sponsors:



JACOBS®

Lanyards:

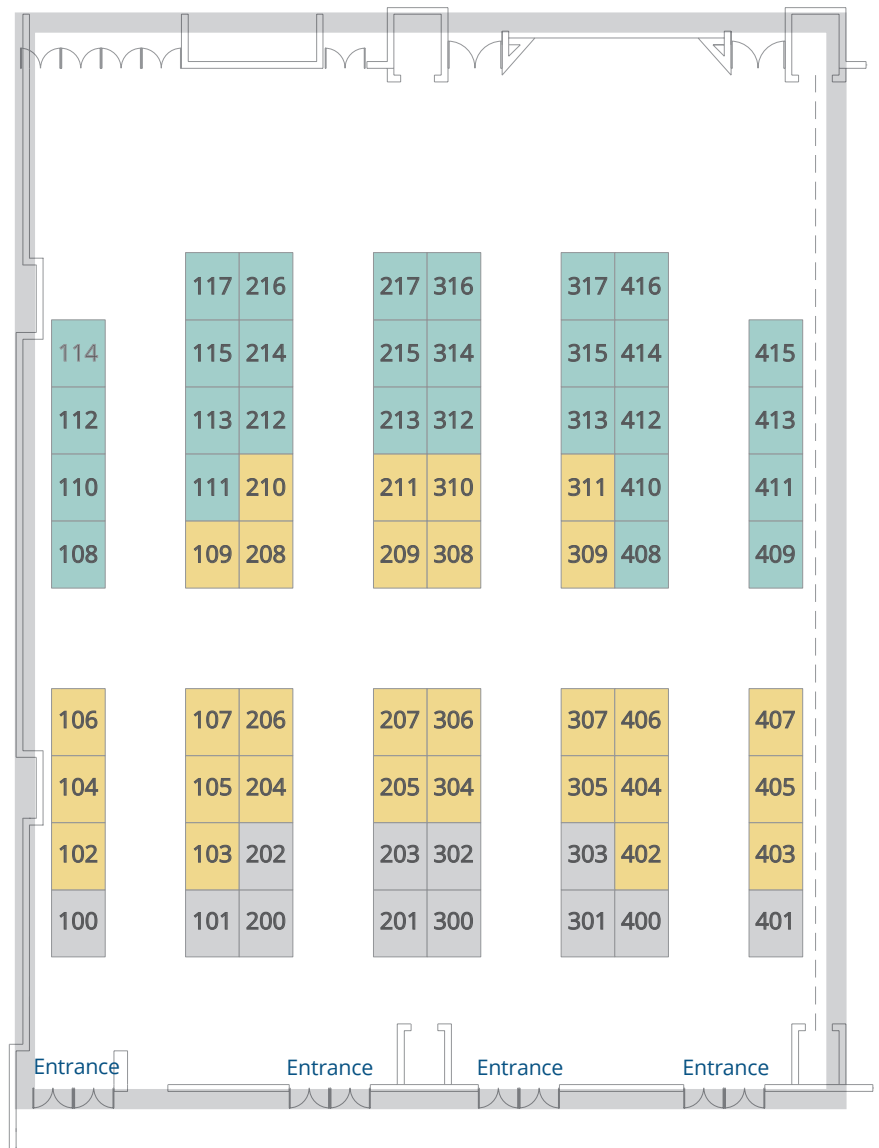


Water Stations:



Exhibit Hall Map

EXHIBITOR	BOOTH
AECOM Technical Services, Inc.	309
Antea Group	301
Apex Companies, LLC	210
APTIM	204
Arcadis	203
Bloomberg Environment	202
Chemwatch Americas	307
CHWMEG, Inc.	305
Civil & Environmental Consultants, Inc.	308
Cority	102
Dakota Software	304
EA Engineering, Science and Technology, Inc., PBC	108
eDriving	401
ehsAI	205
Enablon	400
Enhesa	209
Enviance	403
Environmental Resources Management (ERM)	206
EY LLP	217
g2revolution	101
Gannett Fleming, Inc.	117
Gensuite	201
Geosyntec Consultants	105
GHD Inc.	109
Golder Associates	208
Heritage Environmental Services	100
HETI	410
Hodgson Ross LLP	213
HRP Associates, Inc.	113
Huco Consulting, Inc.	402
Intelx Technologies	303
Jacobs	306
KES Industrial, LLC	110
Lifeguard Solutions	313
Locus Technologies	215
The Marcom Group, LTD	104
McCoy and Associates, Inc.	207
ProcessMAP Corporation	302
Ramboll	103
Red-on-line	111
Redshift Technologies, Inc.	415
RegScan, Inc.	413
Roux Associates	409
Schneider Electric	300
SHE Software	216
Specialty Technical Publishers	314
Sphera	107
Stantec Consulting Services Inc.	315
Temarry Recycling Inc.	311
Tetra Tech, Inc.	408
Trihydro Corporation	406
Trinity Consultants	212
US Ecology	312
VelocityEHS	200
Veolia	316
Verisk 3E	411
Wood	404
Woodard & Curran	214
Workcare Inc.	412
WSP USA Inc.	115
xOverTime, Inc.	317



Metropolitan Ballroom Foyer

Exhibit Hall Hours

Wednesday, October 16, 2019

- 7:00 a.m. – 8:00 a.m.
- 9:45 a.m. – 10:30 a.m.
- 3:00 p.m. – 3:45 p.m.
- 5:30 p.m. – 7:00 p.m.

Thursday, October 17, 2019

- 7:00 a.m. – 8:15 a.m.
- 9:45 a.m. – 10:45 a.m.

Thank You 2019 Forum Planning Committee

The EHS & Sustainability Management Forum is made possible through the time, energy and expertise of the Forum Planning Committee.

Sonora Munks

Director of Programs
NAEM

Virginia Hoekenga

Deputy Director
NAEM

Paul Robbertz

2019 Committee Chair
Senior Director, Environmental
Health and Safety
Danone North America

Darrell Bradfield

EHS Director, Programs,
Culture & Governance
Advance Auto Parts Inc.

Rodney Canada

Director, EHS
Comcast Corp.

Gregory Carli

Principal
GHD Pty Ltd.

Lesley Clarke

Manager, Environmental
Performance Department
Walker Industries Inc.

Rebecca Corbin

Senior Principal, Project Manager
Woodard & Curran Inc.

Amy Ebersole-Martinez

Manager, Environmental,
Safety and Health
Petco Animal Supplies Inc.

Kevin Harris

Exelon Utilities Corporate
Performance Manager of Safety,
Environmental & Human Performance
Exelon Corp.

Michael Hecker

Partner
Hodgson & Russ LLP

Dennis Hu

Director, Environmental Health
and Safety and System
Safety Engineering
Ball Aerospace

Ellen Huang

Director, Environmental Affairs
Gates Corp.

Scott Ickes

Senior Manager, Compliance
Decorative Panels International Inc.

Brijesh Krishnan

Global Waste Management and
Environmental Leader
Cummins Inc.

Mary Linn Leonards

Eastern Sales Manager
Heritage Environmental
Services LLC

Denny Lerch

Senior Associate
Haley & Aldrich Inc.

Mansa Manjunath

Director
GenSuite LLC

Mike Miller

Vice President, Risk,
EHS & Sustainability
Advance Auto Parts Inc.

Cari Moore

Senior Manager, Environmental
Protection
Cox Enterprises Inc.

Gary Nasta

Director, Global Environmental
Affairs & Safety
The Estée Lauder Companies Inc.

Helen Pappas

Northeast Area Manager
Gannett Fleming Inc.

Annette Russo

Environmental Health,
Safety and Sustainability
Johnson & Johnson

Lori Smargiassi

Senior Staff Environment, Health
and Safety Engineer
Lockheed Martin Corp.

Julie Smoak

Environmental Manager
Toyota Tsusho America Inc.

Lindell Sneed

Manager, Environmental Programs
Abbott Laboratories

Kelly Sobczak

Global Director, Sustainability and EHS
Compliance
Jacobs Engineering Group Inc.

Monica Torres

Senior EHS&S Technical Manager
Baxter Healthcare Corp.

Mike Wells

Director, Environmental Health & Safety
Ardagh Group

Nicole Wilkinson

Director, Corporate Environmental
CVS Health Corp.

Join us October 20-23, 2020 for the **28th Annual EHS & Sustainability Management Forum** in Fort Worth, Texas